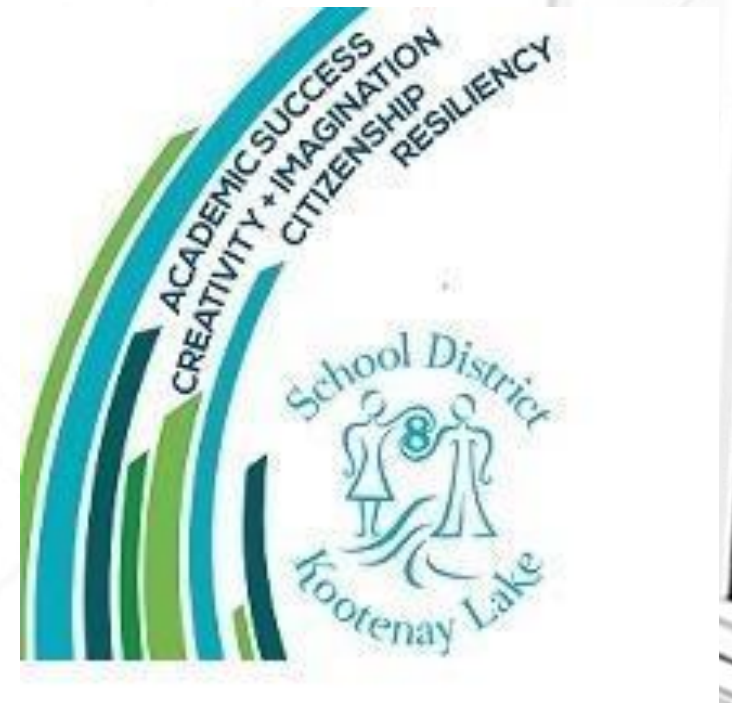


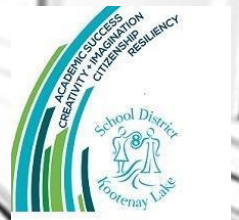
Long Range FACILITIES PLANNING

School District No. 8
Public Consultation
Consideration of School Closure:
Salmo Elementary
June 22, 2016



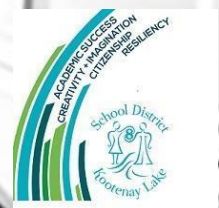
Work Done Since May 3

- Staff to staff meetings:
 - SD8 Staff and Village of Salmo Staff
 - SD8 Staff and SES & SSS Principal & Vice-Principal
- Trustee meetings:
 - Consultation meeting in each community with consideration of closure
 - Consultation meeting with all municipal, local government and Lower Kootenay Band (June 17)
- Appraisal of Salmo Elementary School: pending
- Salmo Secondary Addition: Engineered/Design Aid Completed



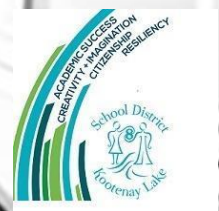
Impact of Scenario - Educational

- Maintains secondary program in community
- Builds on successful recent migration from two schools to the concept of one school/two campuses
- Builds on K-12 success stories in SD8 (JV Humphries, Crawford Bay)
- Reduces transitions
- Keeps elementary students close to community
- Provides specialty resources in one location



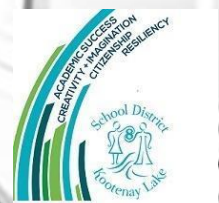
Impact of Scenario - Financial

- Provides operational and capital savings
 - Requires capital outlay
-
- Operating Savings: \$193,800 annually (on-going)
 - Initial Capital Outlay: **\$2.7 - \$4.4 million (UPDATED)**
 - Elimination of Future Deferred Maintenance: **\$3.3 million (one-time)**



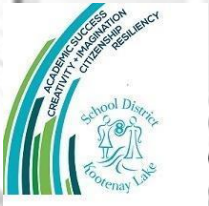
Impact of Scenario - Operational

- Matches original design of Salmo Secondary at time of construction which included community input
- Considers addition of space at Salmo Secondary recognizing elementary age group in the school
- Engineered using design aid sheet. However there is no Ministry design aid sheet for K-12. \$4.4 million derived from adding a K-7 school design aid sheet to existing secondary footprint. This proposal adds 236 or more seats/10 classrooms vs the 112-120 seats proposed in the initial plan and brings the functional capacity utilization down to 72% or nominal capacity down to 80%
- Capital outlay could be partially mitigated by negotiations with MOE on the design aid and a partnership with community centre as additional space for instruction instead of build
- Good case for renewal with 96% capacity utilization (if only 120 seats added) and poor facility condition at Salmo Elementary

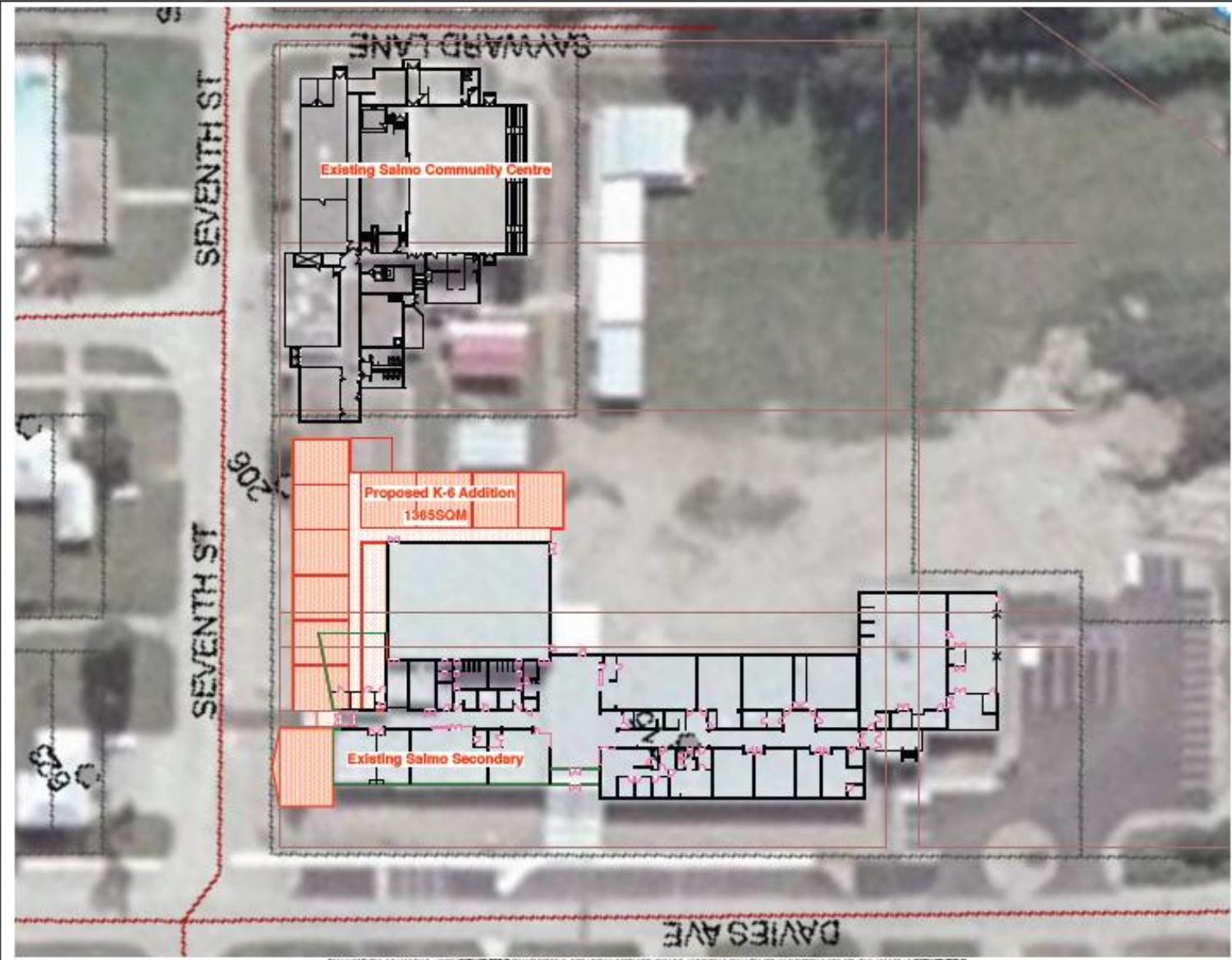


Impact of Scenario – Capacity Utilization

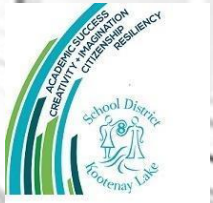
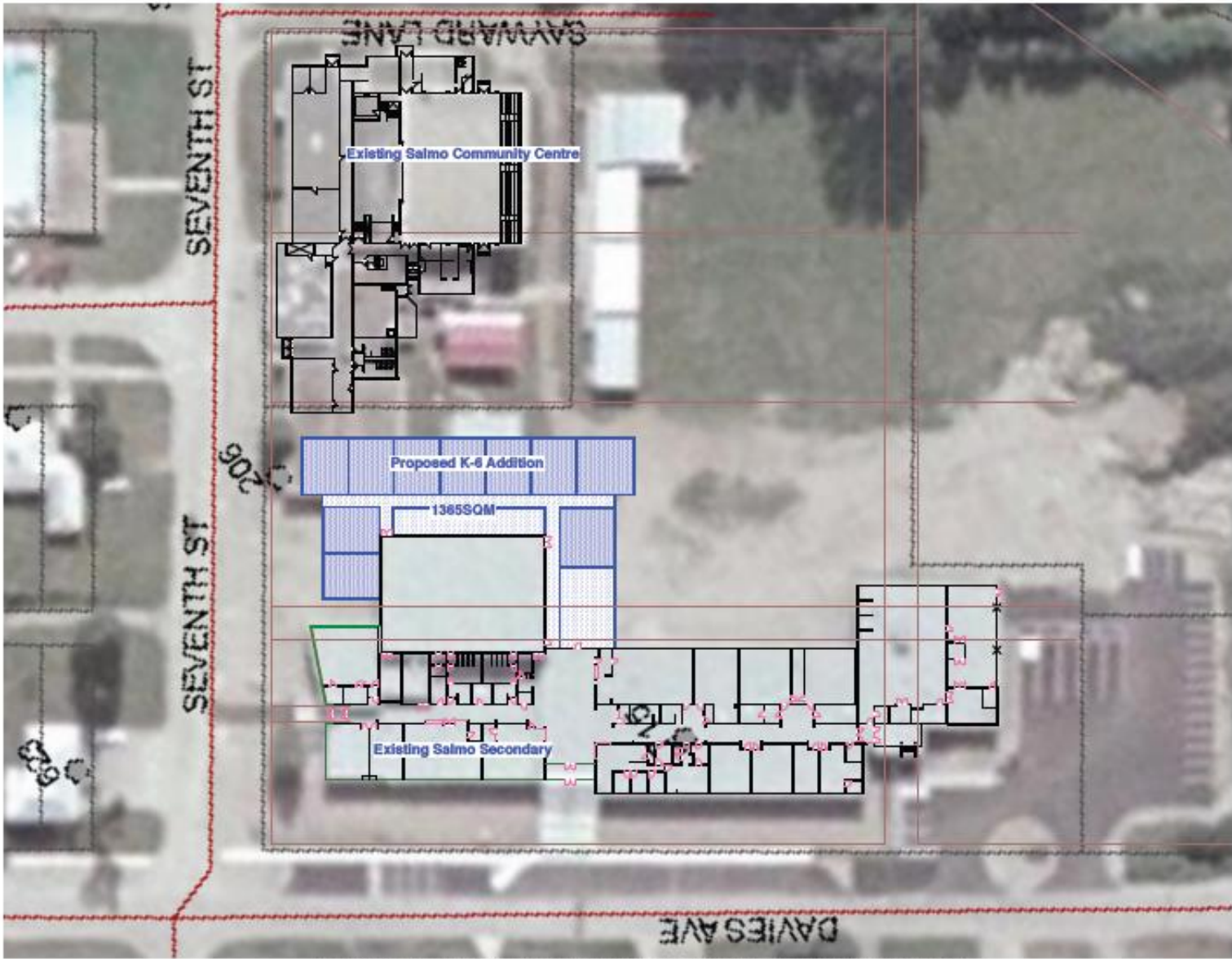
School	Status Quo	S-3
Salmo Elementary	73%	0%
Salmo Secondary	75%	96%



Impact of Scenario – Possible Footprint A



Impact of Scenario – Possible Footprint B



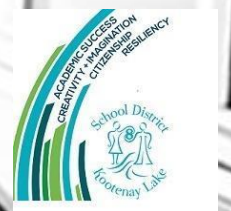
Closure Framework Should a School Close

- Decommissioning Schools After School Closure
- If a decision has been made to close a school, the physical plant must be decommissioned and students, staff, resources and equipment transitioned to new sites. The following is a an excerpt from the DRAFT framework for the closing of a school and transitioning to a new site. Framework is expected to be customized for each school and timeline



In Preparation for Closure

- Arrange transition visits, if possible, for students and staff from closing schools to visit receiving schools; and joint PAC meetings
- School that is closing and school to where students are redirected prepare a transition plan for students
 - Opportunities for students from school that is closing to visit and interact with students from the school where they are being redirected
 - Opportunities for staff from closing school to meet with staff at school where students are being redirected to speak to the learning needs of students being transitioned
- Closing school to host/hold public event honouring the history of learning at the school



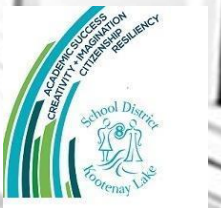
Last Day of Closing School to First Day of Receiving School (during summer)

- Invite to make requests for resources, in the following order:
 - Receiving school (Team: P or VP, PAC Chair and IT Rep for receiving school tech needs)
 - Schools in the family of schools
 - All remaining schools in the district
- District staff consider requests and allocate inventory; operations crew to move
- Move remaining resources to a district storage facility for future use or auction



Next Steps

- June 15-July 5: Board continues to gather information
- July 5: First and Second Reading of School Closure By-Law
- July 12: Third Reading of School Closure By-Law



Next Steps Cont.

If 3rd Bylaw Reading Passes

- Capital plan including Salmo Secondary addition is submitted to Ministry to secure capital funds
- Disposal process begins (surplus, non-SD8 student sites) to build local capital surplus for renovations
- Once Salmo Secondary renovations are completed, Salmo Elementary closes and students move

If 3rd Bylaw Reading Fails

- Status quo

Thank you

