

# 2019-2029 Long-Range Facilities Planning -Consultation Meeting 2-



Meeting at Crawford Bay Elementary Secondary School  
October 30, 2019

# School District No. 8

## Facilities Planning - Dates



### Historical Dates:

- Last Long-range Facilities Plan for 2016-2024 - was approved July 12, 2016
  - Disposal of Crawford Bay Hall Property - March, 2018
  - DESK Transition to LVR - August, 2018
  - Disposal of Creston Properties - January, 2019
  - Board Office move to Central Ed - August, 2019
- 2020-2021 Capital Intake Submission - June, 2019
- Baragar Long-range Enrolment Data Projections - August, 2019
- VFA Facility Condition Assessments - September, 2019

### Future Dates:

- 2019-2029 Facilities Plan Consultation Meetings - October & November, 2019
- 2019-2029 Long-Range Facilities Plan Approval - \*December 10, 2019
- Property Sales to Free-up Local Capital Expected in 2019-2020

# School District No. 8

## Enrolment & Enrolment Projections Overview



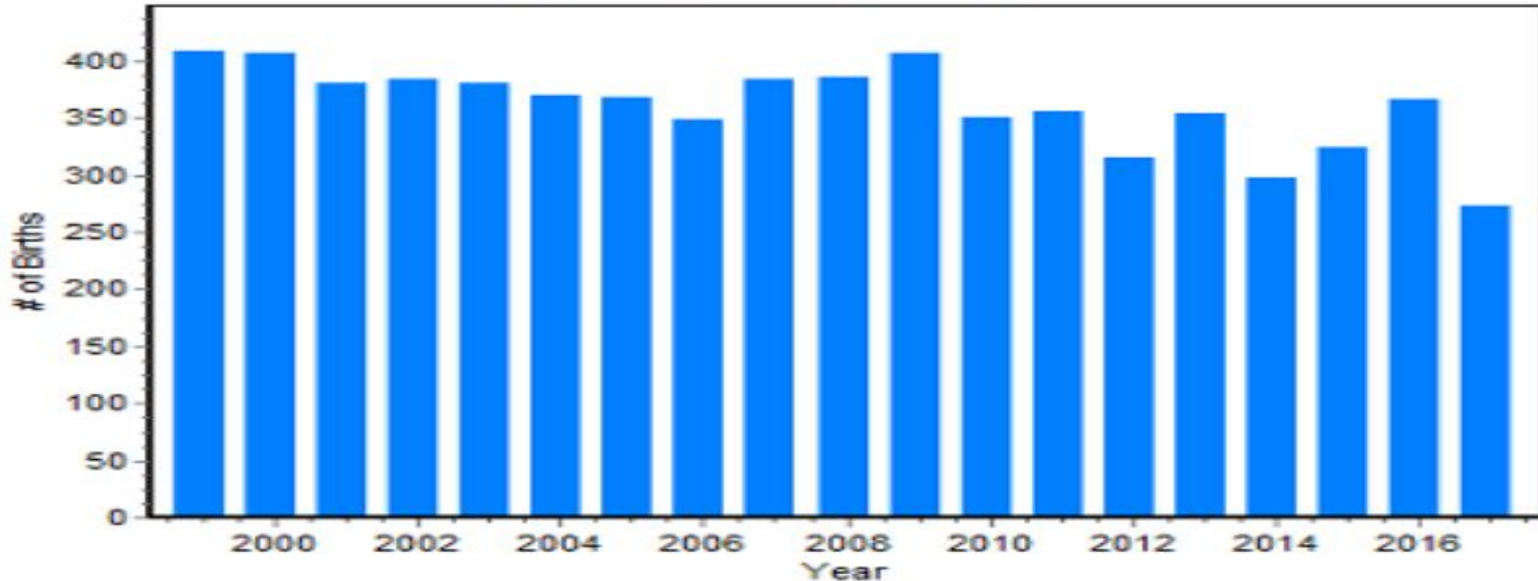
- **Current Year District Enrolment (September, 2019):**
  - ~5,031 students (Headcount)
  - ~4,808 student (FTE)
- **Future-Years Enrolment projections (by Baragar):**
  - Near-term slight increase in overall enrolment for the next two years.
  - Long-term show decline trend over 10 years.

# School District No. 8

## Historic Births within District

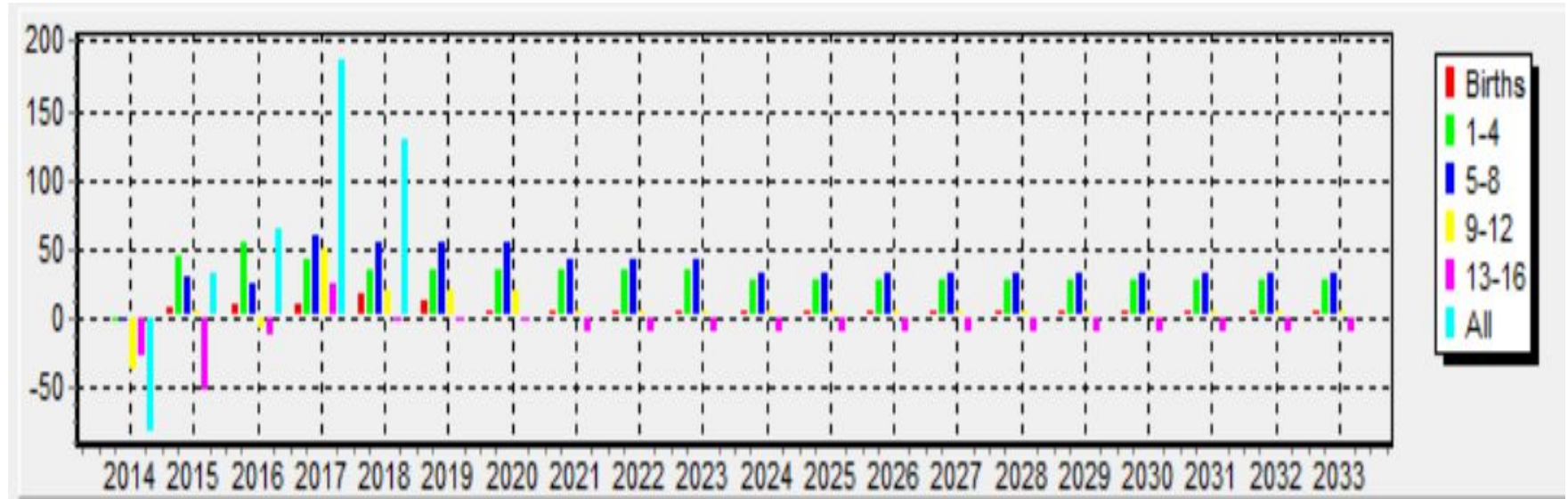


**Births: District as a School**



The number of births to women residing within the Kootenay Lake School District has decreased significantly over the last 8 years, with 2017 reaching the lowest number in over 20 years. The children currently enrolled in grades K-12 were born between 2001 and 2013, during which time the number of births per year averaged 368. Over the last 4 years, the births have averaged 315 per year, a decrease of 53.

# School District No. 8 Population Net Migration



Note: The net impact of youth moving in and out of the District has been generally positive over the last 10 years, with 2017 (+187) and 2018 (+128) reflecting the largest increases. The assumptions used in this projection are for continued positive growth, varying by age group but averaging +122 for next year, similar to the current year. Starting in 2024, the assumptions that have been used average +62, similar to the 5 year average.

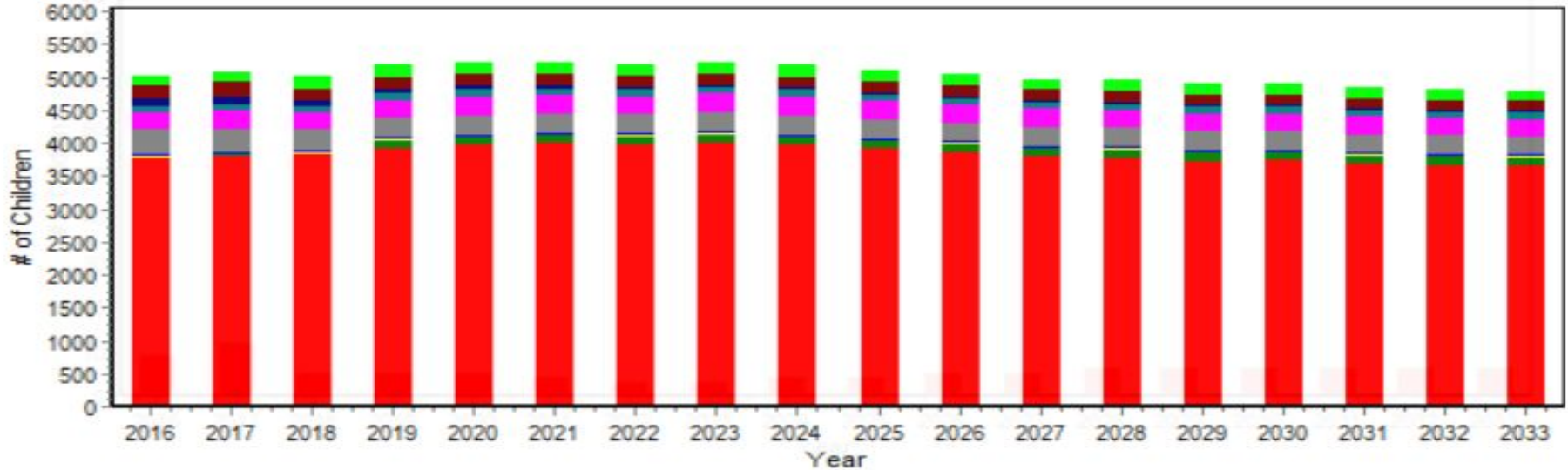


# School District No. 8

## Long-range Enrolment Projections by Program



Total Enrolment Patterns 2016 - 2033  
District as a School

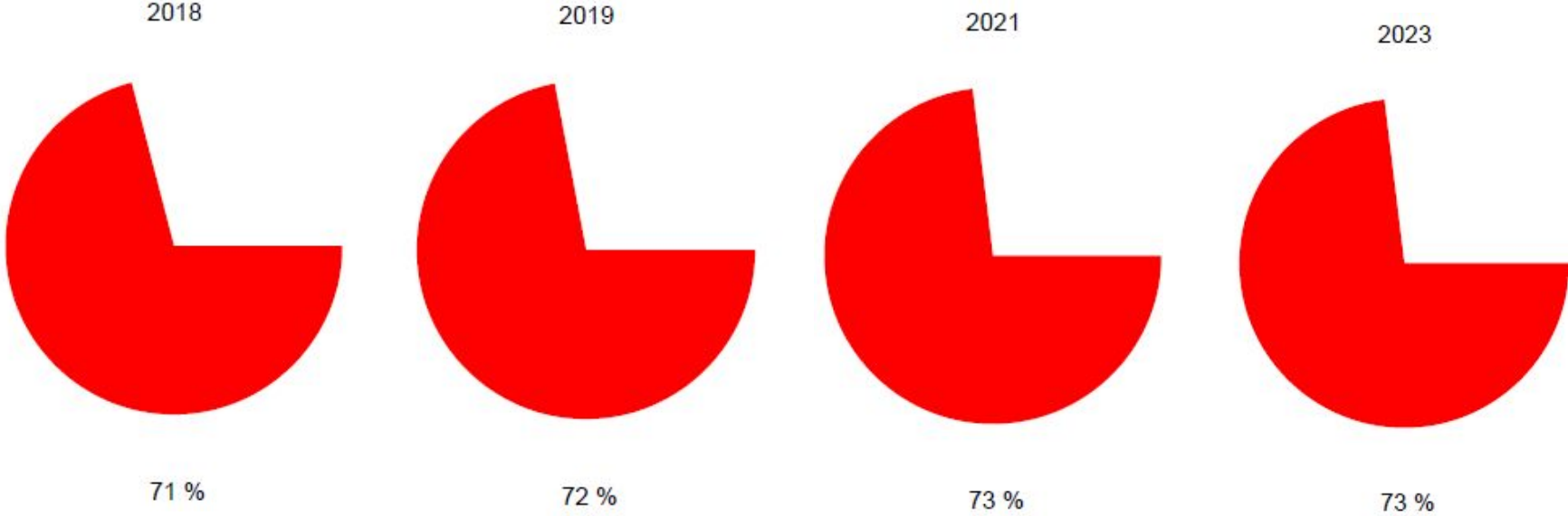


- Regular IC
- Regular OC
- Distance Education
- French Immersion
- Wildflower
- Alternate
- Funding - International
- Alternative
- Home Schooled

# School District No. 8 Participation Rates



Average Participation  
District as a School: Baragar assumptions without local knowledge



Historical

Forecast



# School District No. 8

## Existing Board-owned Facilities & Land Summary



- Board-owned Properties:
  - 33 Major Land Parcels
  - 43 Buildings
    - 24 School Buildings
    - 2 Portables Used for School
    - 11 Operations Buildings, Garages or Pump Houses
    - 1 Board Office
    - 5 Leases to Licensed Daycares or CSF (SD93):
      - 2 Buildings
      - 3 Portables
- Leased Properties: The Board also leases three properties to run programs.



# Existing Facilities Plan

## Schools Formerly Under Consideration for Closure

- **Trafalgar Middle**
  - Current Student Enrolment: 414 Headcount
  - Facilities Condition Index: 0.54
  - Closure was considered as part of a proposed replacement of Trafalgar with a new South Nelson Elementary, however, the REP funding request has not been, and is not believed will be successful.
  - Expansion/Renovation under consideration for 2019-2029 Long-range Facilities Plan
- **Salmo Elementary**
  - Current Student Enrolment: 144 Headcount
  - Facility Condition Index: 0.71
  - EXP (expansion) funding requested to build additional space at Salmo Secondary to accommodate Salmo Elementary students.
  - Closure after construction of new facility
- **Jewett Elementary**
  - Current Student Enrolment: 10 Headcount
  - Facility Condition Index: 0.37
  - REEF Funding = \$92,277 per year
  - Per Board resolution, closure was halted due to REEF funding.



# Existing Facilities Plan Properties Under Consideration for Sale

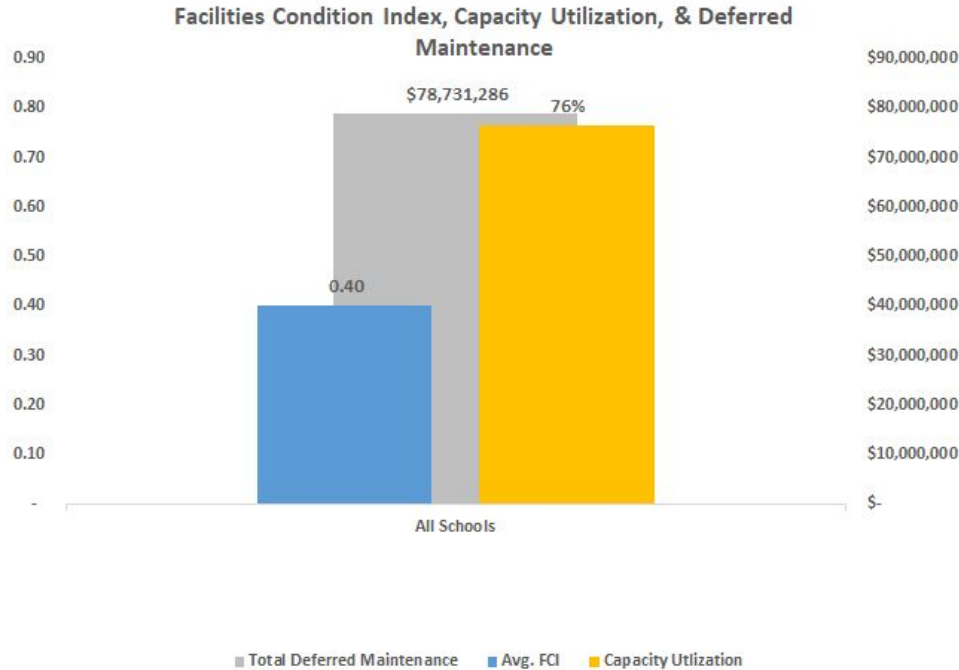


Property Interest	Location	Board Resolution*
<ul style="list-style-type: none"> <li>School Board Office, 570 Johnstone Rd</li> </ul>	Nelson, BC	n/a
<ul style="list-style-type: none"> <li>Former Al Collinson Elementary</li> </ul>	Nelson, BC	n/a
<ul style="list-style-type: none"> <li>Former Gordon Sargent Elementary</li> </ul>	Nelson, BC	n/a
<ul style="list-style-type: none"> <li>Kin Park</li> </ul>	Creston, BC	n/a
<ul style="list-style-type: none"> <li>Tennis Courts &amp; Pool Land</li> </ul>	Salmo, BC	n/a
<ul style="list-style-type: none"> <li>Ymir Land</li> </ul>	Ymir, BC	January 9, 2018
<ul style="list-style-type: none"> <li>Yahk Elementary</li> </ul>	Yahk, BC	July 12, 2016
<ul style="list-style-type: none"> <li>Retallack Land</li> </ul>	Retallack, BC	September 1, 2015

\*Any properties the Board has not already resolved to sell will not be put up for sale until at least after the conclusion and adoption of the 2019-2029 Long-range Facilities Plan, and Board approval is thereafter obtained.

# School District No. 8 - All Schools

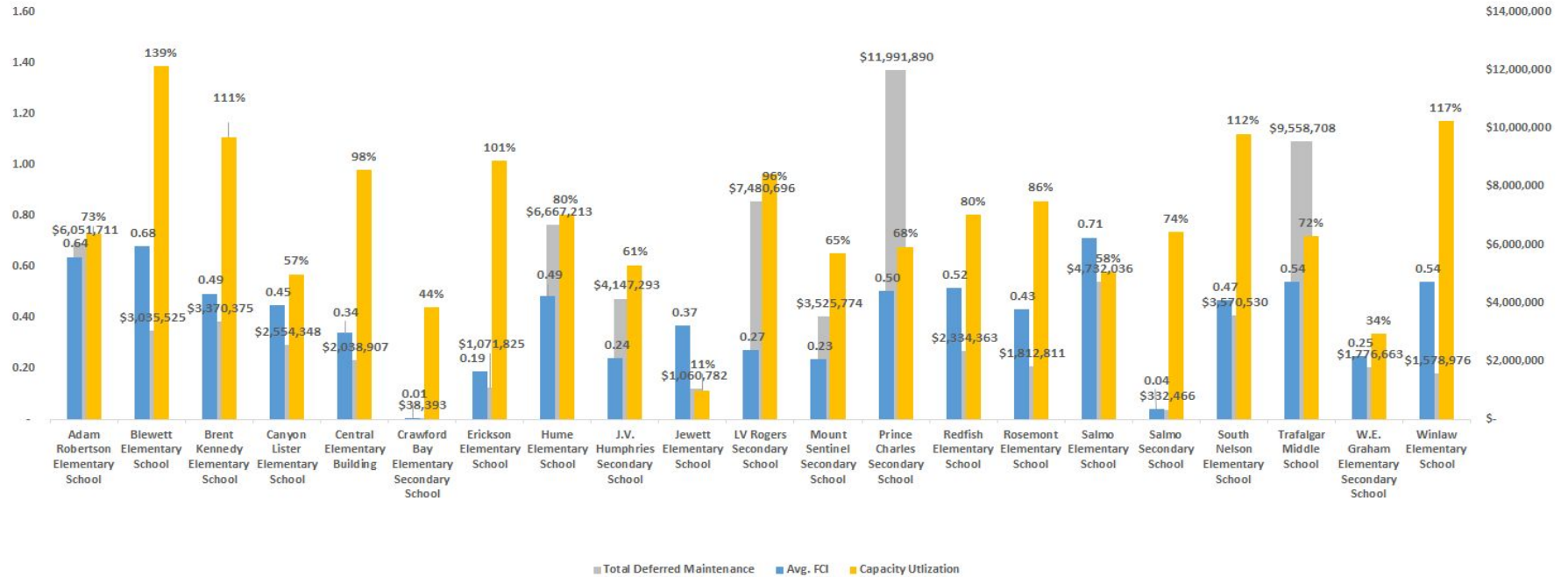
## Average FCI, Utilization & Deferred Maintenance



# School District No. 8 - All Schools



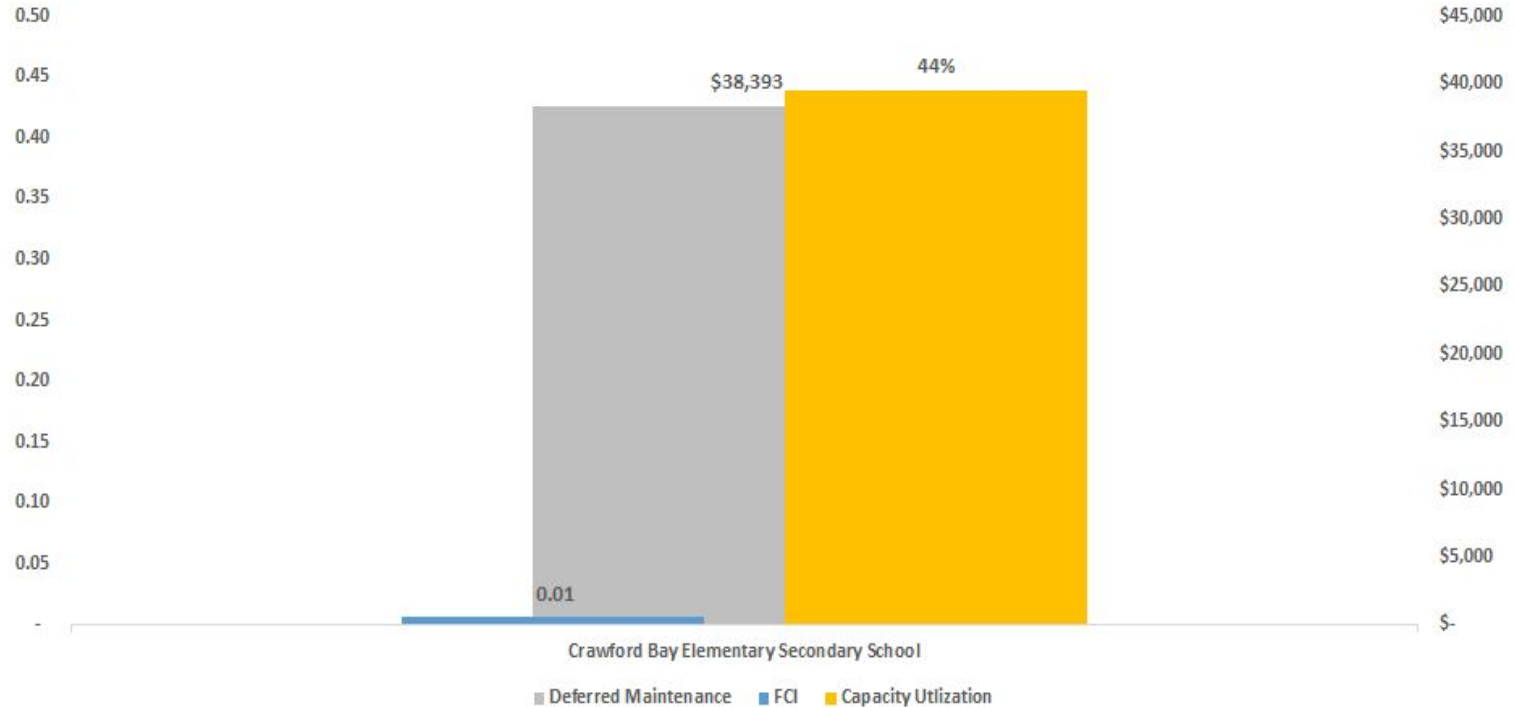
Facilities Condition Index, Capacity Utilization, & Deferred Maintenance



# Crawford Bay Family of Schools



Facilities Condition Index, Capacity Utilization, & Deferred Maintenance



# Crawford Bay Family of Schools

- **Crawford Bay Elementary Secondary School**

- Built: 2009
- Operating Capacity: 182
- Total Student Enrolment = 80
  - Elementary = 45
  - Secondary = 35
- Building Metrics:
  - Capacity Utilization: 44%
  - Facilities Condition Index: 0.01
  - Deferred Maintenance: \$38 K

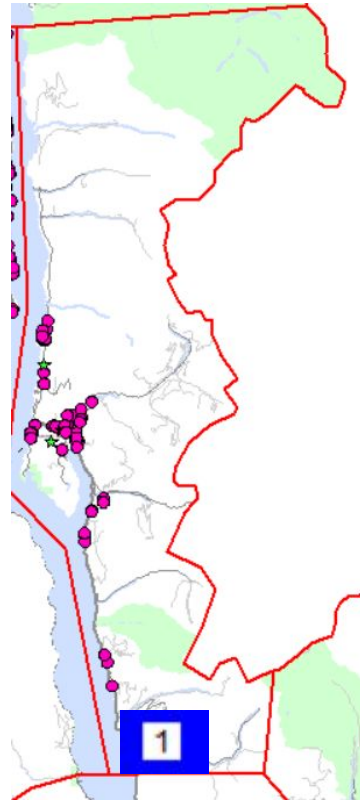


\*Facilities Condition Index (FCI): a metric of the avg. progress of a building through its useful life, where “0” is a brand new building and 1.0 is at the end of its useful life.

\*\*Deferred Maintenance: an estimate of the cost of restoring a building to its original condition.



# Crawford Bay Elementary Secondary School 2018-2019 Students by Catchment



# Crawford Bay Elementary Secondary School Participation Rates

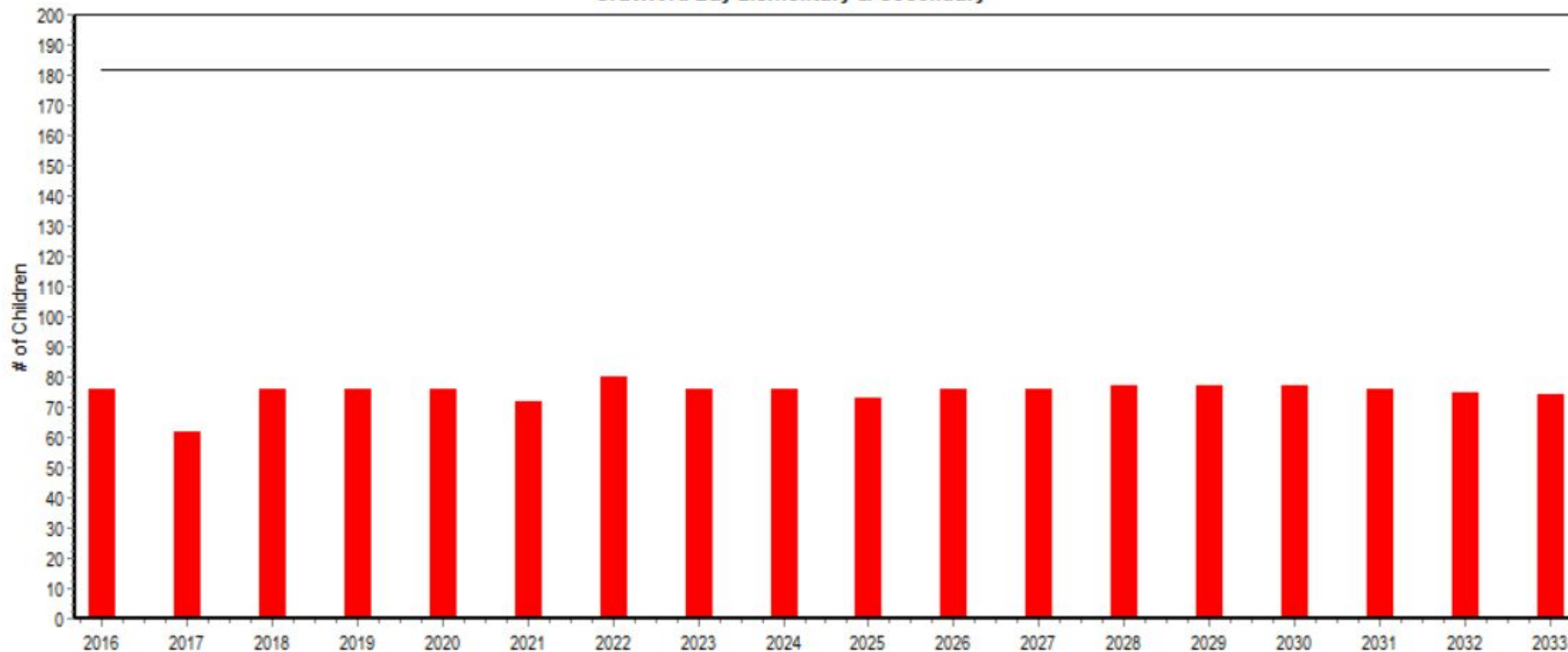


- Approximately 105 Youth Aged Population in Catchment (97 Youth in 2017, 105 Youth in 2018), of which:
  - 80 youth go to Crawford Bay ESS
  - 8 go to LV Rogers
  - 2 go to PCSS
  - 2 go to ARES
  - 2 Homelinks - Creston
- No out-of-catchment students
- Participation Rate at SD8 is approximately 80% of Catchment Youth Population

# Crawford Bay Elementary Secondary School Enrolment Projection



Total Enrolment Patterns 2016 - 2033  
Crawford Bay Elementary & Secondary



# Crawford Bay Family of Schools

## Survey Responses at Spring Consultation Meeting 2019



### **What is working well?**

- Warm, inviting school, natural light, welcoming, comfortable
- Community involvement & sharing facilities - school is a hub, space enjoyed by student/parents/seniors, community volunteers, mentorship program, fitness centre, pre-school area, office spaces, community meeting rooms
- Hot lunch program
- Cross-enrolment. Ability to transfer to LVR and still graduate from CBESS.
- Scholarship opportunities
- Drama/theatre space - local performances
- Great playground, lab, woodworking shop, kitchen, food rooms
- Large gymnasium - evening volleyball games, martial arts classes
- Adult classes through Selkirk College

# Crawford Bay Family of Schools

## Survey Responses at Spring Consultation Meeting 2019



### **What could you let go of?**

- Online courses (e.g. pre-calculus 10) - challenging to be motivated/focused, difficult to get appropriate support, could be done in a more effective way
- Gym roof designed poorly & balls get stuck up there, need to call in someone with a lift to get them down
- Gym maintenance ground floor door doesn't seal very well & cold air blows in
- Need a better field, no topsoil
- Exterior siding done wrong, not staggered
- Higher level sciences not offered
- Better DL/DESK programs

# Crawford Bay Family of Schools

## Survey Responses at Spring Consultation Meeting 2019



### **What are your DREAMS?**

- Complete offering of high school science and math courses - actual teachers rather than online
- Satelike Selkirk College offering
- More students, encourage higher enrolment
- Integration of youth group spaces, community library, public spaces
- Niche focused education. Specialty in outdoor education/farming/outdoor activities/environmental science. Attract international students as well.
- Make use of outdoor space - proper track & field set-up, long jump pit, outdoor classroom, outdoor basketball court, tennis court, grass on the field so it's usable,
- Pool, squash park
- Water bottle refill station
- More funding for more education
- More heaters - school cold in mornings & throughout the day
- Updated first aid room
- Kootenays on the forefront of alternative ways of learning - self-designed programs, project oriented, outdoor driven, programming that makes emotional, spiritual learning a priority, educational system that rivals Finland.



# Crawford Bay Family of Schools

## Survey Responses at Spring Consultation Meeting 2019



### **What resources would be needed for your DREAMS?**

- More funding
- Higher enrolment, we are under 50% capacity
- More separate classrooms - homework block room also the socials room, & sometimes homework block placed in the library
- More teachers
- Outdoor education spaces
- Better field, outdoor track & hurdles
- Fast & reliable internet
- Smalls schools join together for larger education experiences
- Advertise, shout it out
- Continued support for mentorship program

# Thought Exchange Survey Top Thoughts - All Schools



What are your thoughts on the strengths and needs of our school facilities?

**Our outdoor activity spaces at all our schools are a real asset. Recent Elementary playgrounds and the partnership tennis courts at LVR are great!** Promoting activity & healthy lifestyles is important starting at a young age, and continuing into adulthood, especially with the lure of electronics.



**All schools in our family of schools are a major part of the communities where they are located.** They bring people together.



**LVR is excessively cramped. What is the plan here?** No room for students to study other than the library. Every classroom full. Classes cancelled because of no space. Academics held in tech classes.



**Staffs ability to persevere through our aging facilities is certainly a strength.** Many of our buildings are 60+ years old with few updates. Teachers are made to adapt to outdated spaces for a far changing curriculum. Well done!



All Thoughts: [click here](#)



# Thought Exchange Survey

## Top Thoughts - Crawford Bay Family of Schools



What are your thoughts on the strengths and needs of our school facilities?

*Note: Not enough participation to display top thoughts rated by Crawford Bay Family of School participants. We need more input from Crawford Bay please!*

- DQ1 Please select your Family of Schools:



%		Person Icon	
2%	(2)	Dark Blue	Crawford Bay
9%	(13)	Blue	Kaslo
59%	(81)	Light Blue	Nelson
12%	(17)	Light Blue	Slocan Valley
3%	(4)	Light Blue	Creston
7%	(10)	Light Green	Salmo
8%	(11)	Light Green	Other

# Survey - Thought Exchange



***Please tell us what you think!***

Add your ideas and thoughts here:

[my.thoughtexchange.com/#537341911](https://my.thoughtexchange.com/#537341911)

## **Some Questions about Facilities to Get You Started:**

- What is working well in your Family of Schools?
- What is not working well in your Family of Schools?
- What could you let go of at your school or Family of Schools?
- What are **Your Dreams** for the Future?
- What resources are needed to make these Dreams successful?