

2019-2029 Long-Range Facilities Planning -Consultation Meeting 2-



Meeting at Trafalgar Middle School
November 7, 2019

Presentation Agenda

- Facilities Plan Process & Dates
- School District No. 8 Enrolment & Facilities Overview
- Facilities Plan Considerations
- Nelson Family of Schools
 - Facilities
 - Enrolment
 - Participation Rates
 - Catchments & School of Attendance
 - Areas of Focus
- Facilities Plan Surveys & Feedback

School District No. 8

Facilities Planning - Dates



Historical Dates:

- Last Long-range Facilities Plan for 2016-2024 - was approved July 12, 2016
 - Disposal of Crawford Bay Hall Property - March, 2018
 - DESK Transition to LVR - August, 2018
 - Sale of Properties to Town of Creston - January, 2019
 - Board Office move to Central Ed in Nelson - August, 2019
- 2020-2021 Capital Intake Submission - June, 2019
- Baragar Long-range Enrolment Data Projections - August, 2019
- VFA Facility Condition Assessments - September, 2019

Future Dates:

- 2019-2029 Facilities Plan Consultation Meetings - October & November, 2019
- 2019-2029 Long-Range Facilities Plan Approval - *December 10, 2019
- Property Sales to Free-up Local Capital Expected in 2019-2020

School District No. 8 Enrolment Projections Overview



School District No. 8

Enrolment & Enrolment Projections Overview



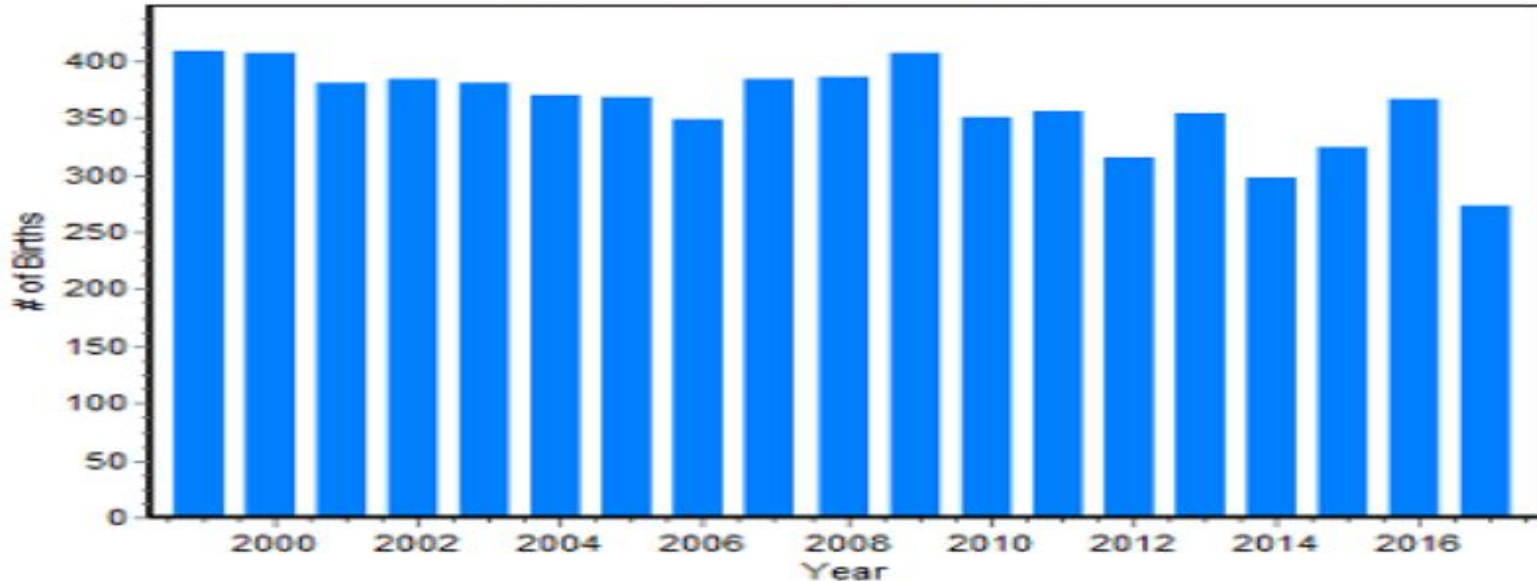
- **Current Year District Enrolment (September 30, 2019):**
 - ~5,031 students (Headcount)
 - ~4,808 student (FTE)
- **Future-Years Enrolment projections (by Baragar):**
 - Near-term slight increase in overall enrolment for the next two years.
 - Long-term show decline trend over 10 years.

School District No. 8

Historic Births within District

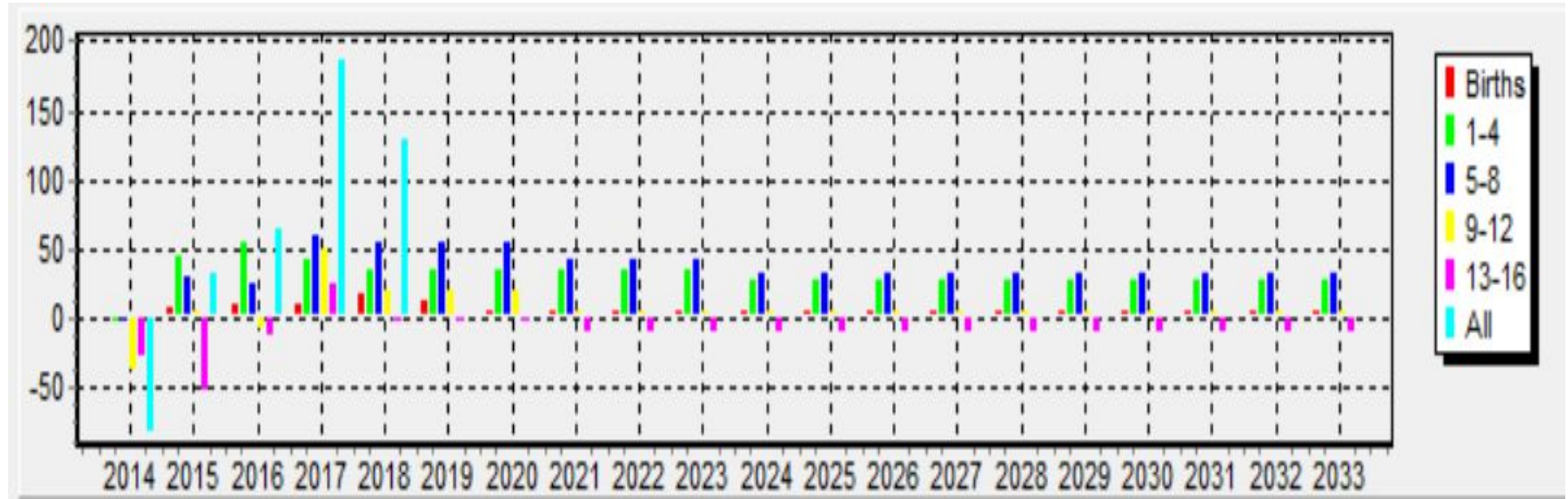


Births: District as a School



The number of births to women residing within the Kootenay Lake School District has decreased significantly over the last 8 years, with 2017 reaching the lowest number in over 20 years. The children currently enrolled in grades K-12 were born between 2001 and 2013, during which time the number of births per year averaged 368. Over the last 4 years, the births have averaged 315 per year, a decrease of 53.

School District No. 8 Population Net Migration



Note: The net impact of youth moving in and out of the District has been generally positive over the last 10 years, with 2017 (+187) and 2018 (+128) reflecting the largest increases. The assumptions used in this projection are for continued positive growth, varying by age group but averaging +122 for next year, similar to the current year. Starting in 2024, the assumptions that have been used average +62, similar to the 5 year average.

School District No. 8

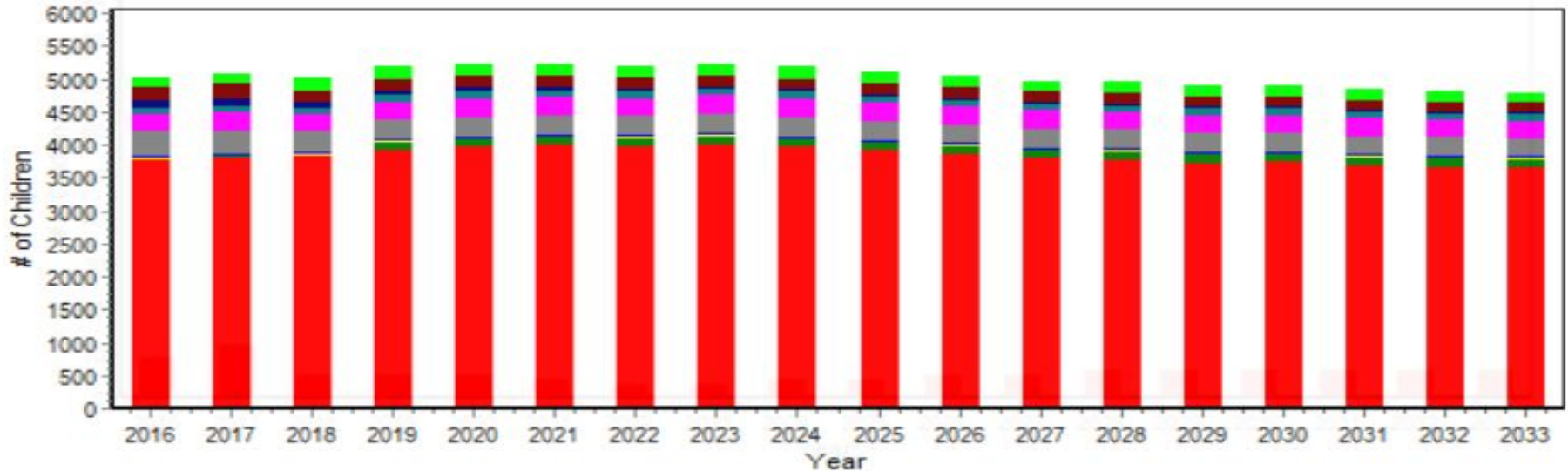
Long-range Enrolment Projections by Program



Total Enrolment Patterns 2016 - 2033

Overall Summary

Total Enrolment Patterns 2016 - 2033 District as a School



- Regular IC
- Regular OC
- Distance Education
- French Immersion
- Wildflower
- Homelinks
- Alternate
- Funding - International
- Alternative
- Home Schooled

School District No. 8 Participation Rates



Average Participation
District as a School: Baragar assumptions without local knowledge



Historical

Forecast



School District No. 8 Facilities Overview



School District No. 8

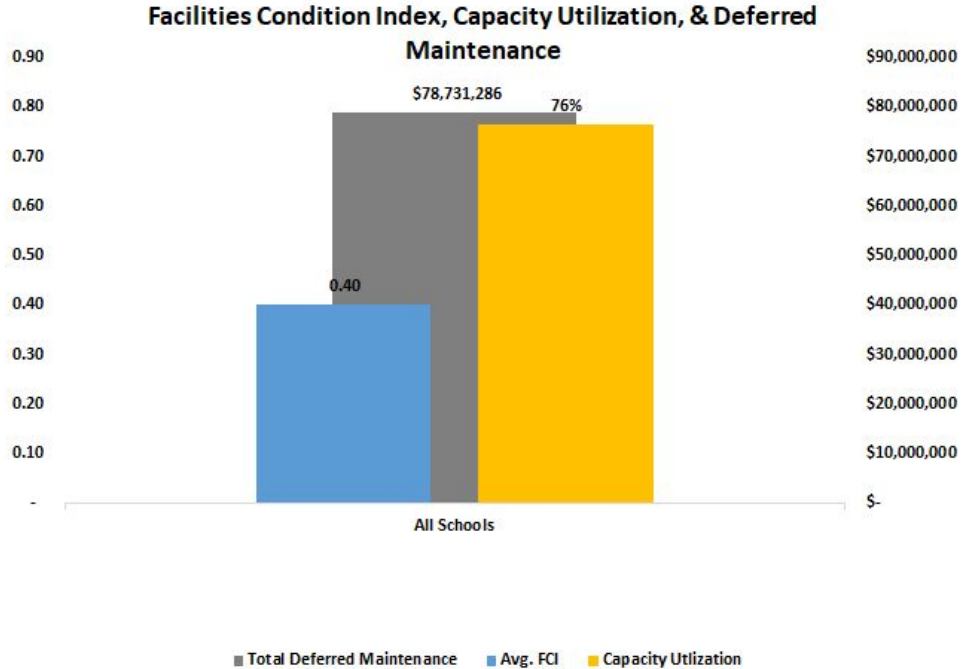
Existing Board-owned Facilities & Land Summary



- Board-owned Properties:
 - 33 Major Land Parcels
 - 43 Buildings
 - 24 School Buildings
 - 2 Portables Used for School
 - 11 Operations Buildings, Garages or Pump Houses
 - 1 Board Office
 - 5 Leases to Licensed Daycares or CSF (SD93):
 - 2 Buildings
 - 3 Portables
- Leased Properties: The Board also leases three properties to run programs.

School District No. 8 - All Schools

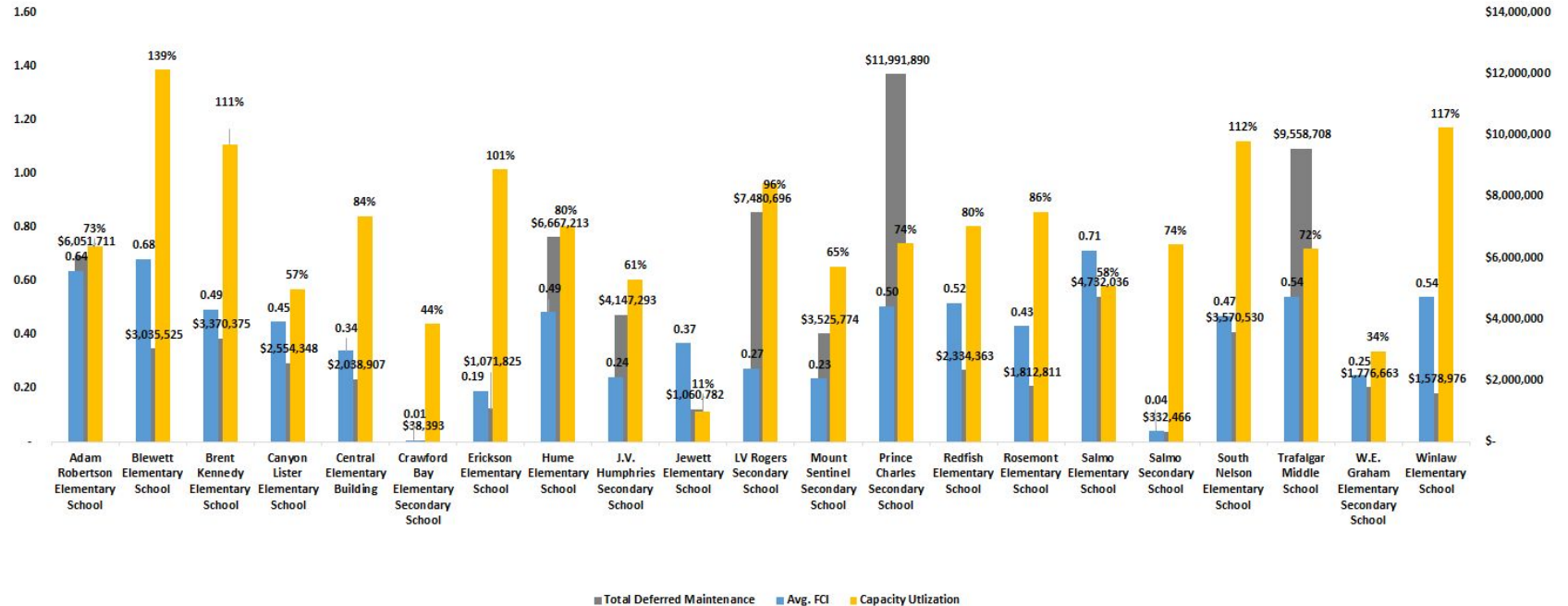
Average FCI, Utilization & Deferred Maintenance



School District No. 8 - All Schools



Facilities Condition Index, Capacity Utilization, & Deferred Maintenance



Long-range Facilities Plan Considerations



Existing Facilities Plan

Schools Formerly Under Consideration for Closure

- **Trafalgar Middle**
 - Current Student Enrolment: 414 Headcount
 - Facilities Condition Index: 0.54
 - Closure was considered as part of a proposed replacement of Trafalgar with a new South Nelson Elementary, however, the REP funding request has not been, and is not believed will be successful.
 - Expansion/Renovation under consideration for 2019-2029 Long-range Facilities Plan
- **Salmo Elementary**
 - Current Student Enrolment: 144 Headcount
 - Facility Condition Index: 0.71
 - EXP (expansion) funding requested to build additional space at Salmo Secondary to accommodate Salmo Elementary students.
 - Closure after construction of new facility
- **Jewett Elementary**
 - Current Student Enrolment: 10 Headcount
 - Facility Condition Index: 0.37
 - REEF Funding = \$92,277 per year
 - Per Board resolution, closure was halted due to REEF funding.



Existing Facilities Plan

Properties Under Consideration for Sale



| Property Interest | Location | Board Resolution* |
|---|---------------|-------------------|
| ● School Board Office, 570 Johnstone Rd | Nelson, BC | n/a |
| ● Former Al Collinson Elementary | Nelson, BC | n/a |
| ● Former Gordon Sargent Elementary | Nelson, BC | n/a |
| ● Kin Park | Creston, BC | n/a |
| ● Tennis Courts & Pool Land | Salmo, BC | n/a |
| ● Ymir Land | Ymir, BC | January 9, 2018 |
| ● Yahk Elementary | Yahk, BC | July 12, 2016 |
| ● Retallack Land | Retallack, BC | September 1, 2015 |

*Any properties the Board has not already resolved to sell will not be put up for sale until at least after the conclusion and adoption of the 2019-2029 Long-range Facilities Plan, and Board approval is thereafter obtained.

Nelson Family of Schools Facilities



Nelson Family of Schools



- **Fifteen Sites / Eighteen Buildings / Eight School Buildings:**

- Schools

- Blewett Elementary School
- Central Elementary School
 - Wildflower School
 - REACH
- Hume Elementary School
- L.V. Rogers Secondary School
- L.V. Rogers Portable
- Redfish Elementary School
- Rosemont Elementary School
- South Nelson Elementary School
- Trafalgar Middle School

- Admin & Maintenance

- Board Office (Central)
- Old Board Office (570 Johnstone)
- Maintenance Office Nelson
- Storage Building
- District Bus Garage
- Refish Pump House

- Leases:

- A.I. Collinson Elementary School
- Gordon Sargent Elementary School
- L.V. Rogers Day Care
- L.V. Rogers Modular

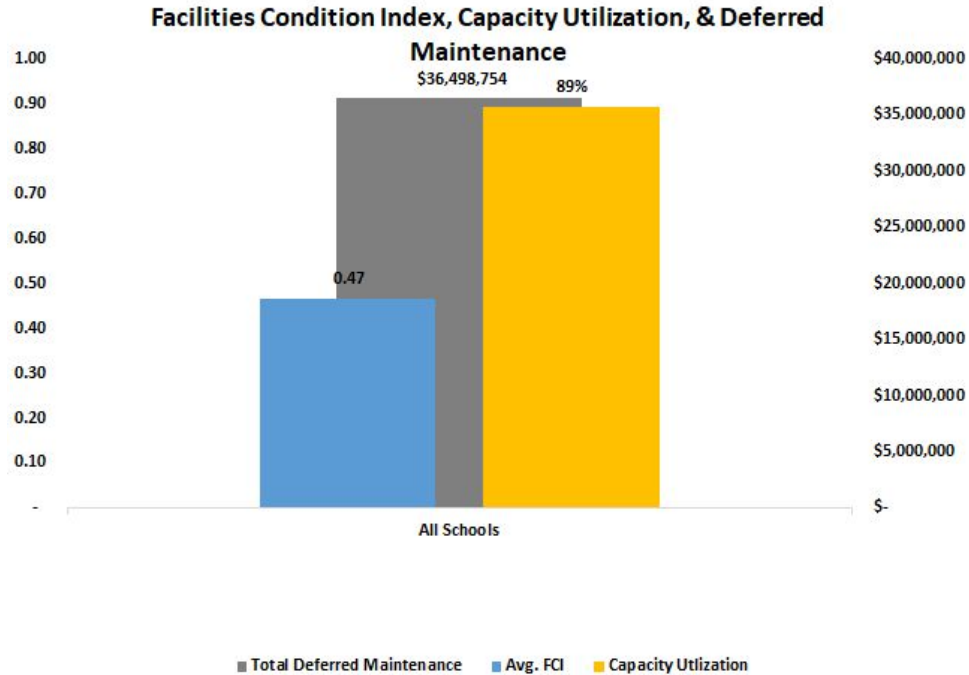
Nelson Family of Schools



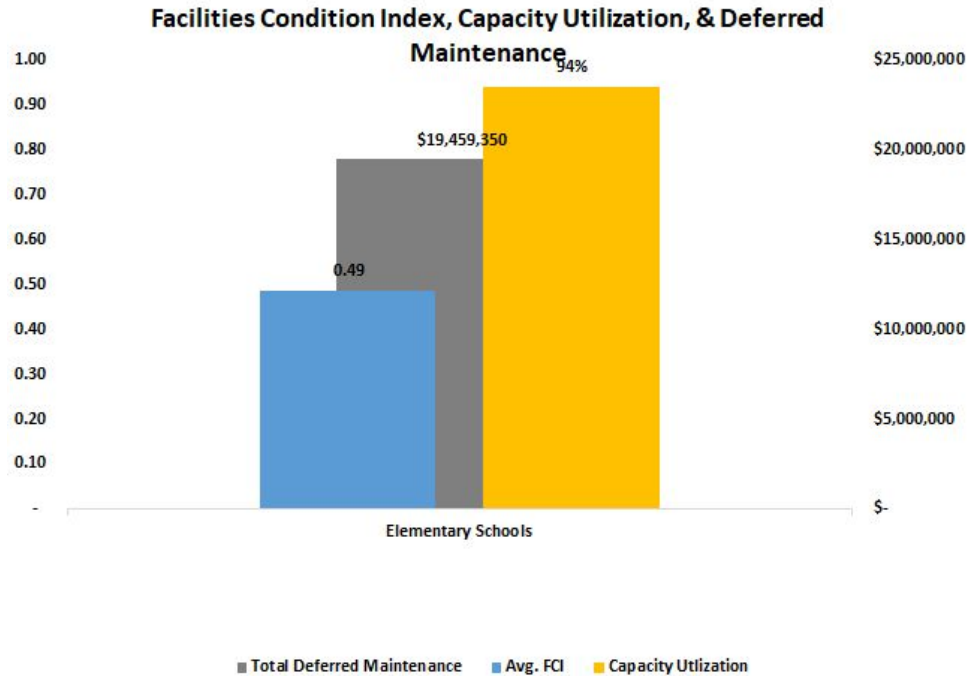
- **Total Headcount Enrolment:**
 - 151 = Blewett Elementary School
 - 197 = Hume Elementary School
 - 698 = L.V. Rogers Secondary School
 - 16 = REACH
 - 106 = Redfish Elementary School
 - 132 = Rosemont Elementary School
 - 223 = South Nelson Elementary School
 - 413 = Trafalgar Middle School
 - 152 = Wildflower Nelson
 - **2,088 = Full-time Student Headcount**
 - 37 = Homelinks Nelson
 - **2,125 = Grand Total Student Headcount**
- **Operating Capacity in Nelson Family of Schools**
 - 109 = Blewett Elementary School
 - 200 = Central Elementary School
 - 245 = Hume Elementary School
 - 725 = L.V. Rogers Secondary School
 - 132 = Redfish Elementary School
 - 154 = Rosemont Elementary School
 - 199 = South Nelson Elementary School
 - 575 = Trafalgar Middle School
 - **2,339 = Total Operating Capacity**
- **89% Capacity Utilization in Nelson Family of Schools (2,125 Students / 2,339 Operating Capacity). Compares with 76% average capacity in SD8.**

Nelson Family of Schools - All Schools

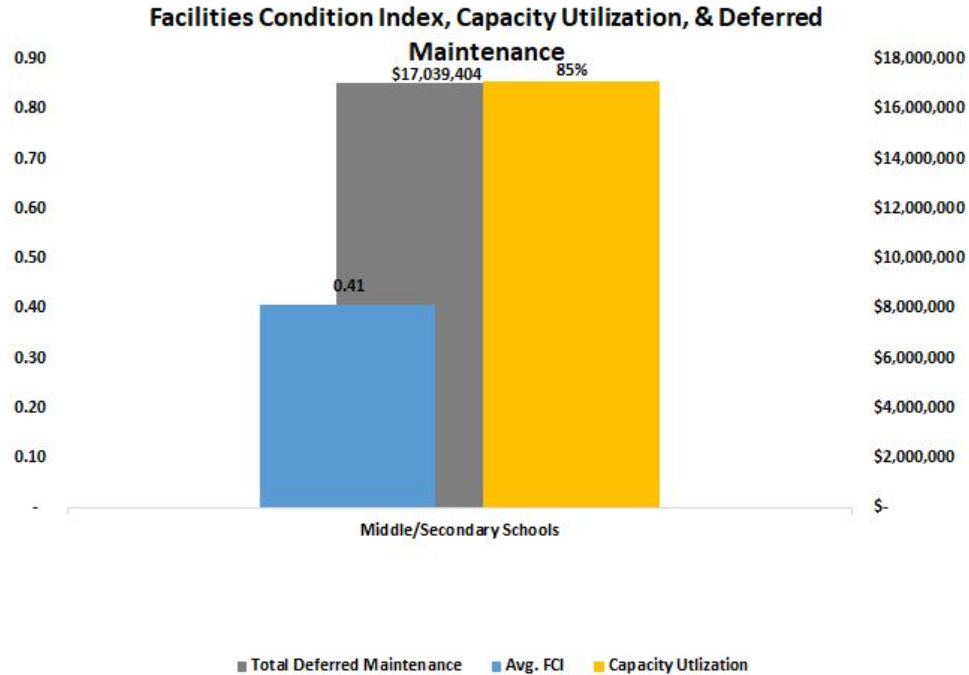
Avg. FCI, Utilization & Deferred Maintenance



Nelson Family of Schools - Elementary Schools Avg. FCI, Utilization & Deferred Maintenance



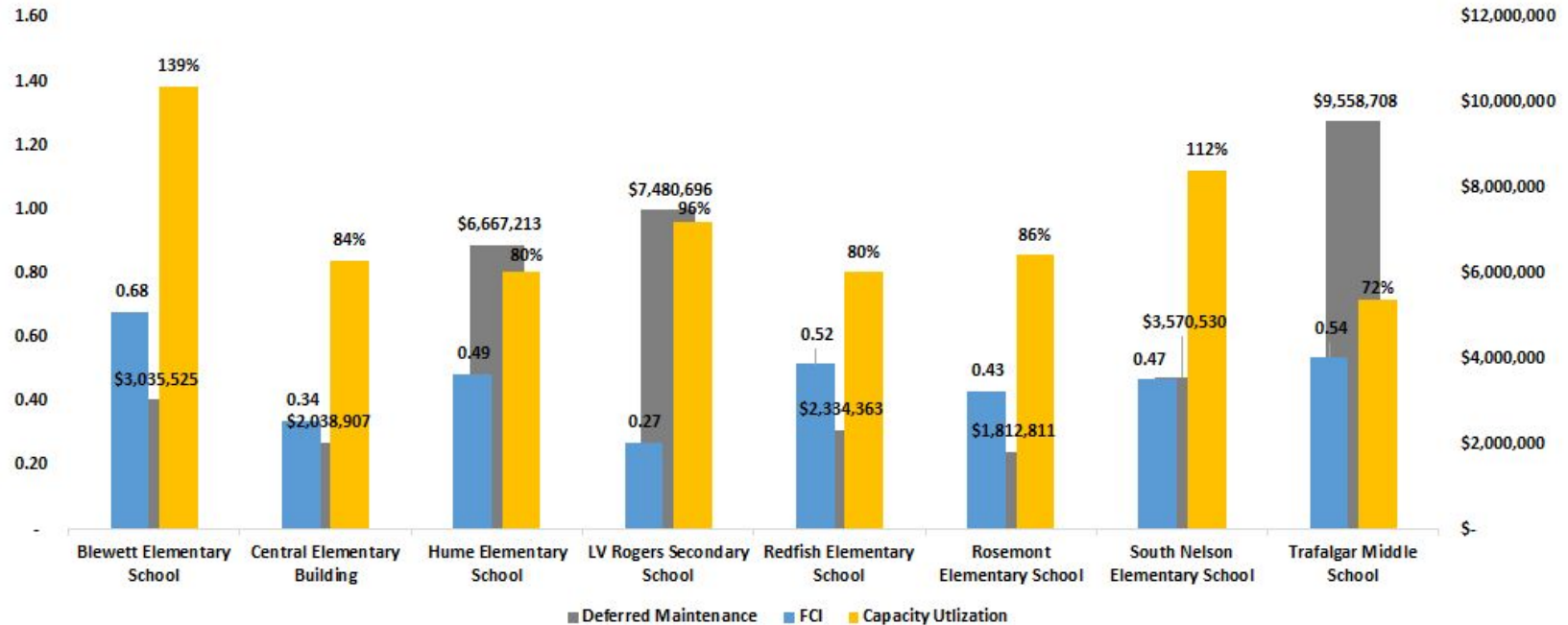
Nelson Family of Schools - Middle/Secondary Avg. FCI, Utilization & Deferred Maintenance



Nelson Family of Schools FCI, Utilization & Deferred Maintenance



Facilities Condition Index, Capacity Utilization, & Deferred Maintenance



*Hume Elementary's FCI will be lower, now that Windows & Doors project completed.

Nelson Family of Schools

- **Blewett Elementary School**

- Built: 1962
- Operating Capacity: 109
- Total Student Enrolment = 151
 - Elementary = 151
- Building Metrics:
 - Capacity Utilization: 139%
 - Facilities Condition Index: 0.68
 - Deferred Maintenance: \$3.04 MM
- Pre-approval for possible EXP Funding (\$5.3 million)
- Project Definition Report (PDR) Due Jan, 2020



Nelson Family of Schools

● Central Elementary School Building

- Built: 1908
- Operating Capacity: 200
(factors in Board Office using 3rd level)
- Total Student Enrolment = 168
 - Wildflower
 - Elementary = 124
 - Middle = 28
 - REACH = 16
- Building Metrics:
 - Capacity Utilization: 84%
 - Facilities Condition Index: 0.34
 - Deferred Maintenance: \$2.04 MM



*Facilities Condition Index (FCI): a metric of the avg. progress of a building through its useful life, where “0” is a brand new building and 1.0 is at the end of its useful life.

**Deferred Maintenance: an estimate of the cost of restoring a building to its original condition.

Nelson Family of Schools

- **Hume Elementary School**

- Built: 1923
- Operating Capacity: 245
- Total Student Enrolment = 197
 - Elementary = 197
- Building Metrics:
 - Capacity Utilization: 80%
 - Facilities Condition Index: 0.49***
 - Deferred Maintenance: \$6.67 MM



*Facilities Condition Index (FCI): a metric of the avg. progress of a building through its useful life, where “0” is a brand new building and 1.0 is at the end of its useful life.

**Deferred Maintenance: an estimate of the cost of restoring a building to its original condition.

***Hume Elementary’s FCI will be significantly lower now that recent Windows & Doors replacement project complete.

Nelson Family of Schools

- **Redfish Elementary School**

- Built: 1987
- Operating Capacity: 132
- Total Student Enrolment = 106
 - Elementary = 106
- Building Metrics:
 - Capacity Utilization: 80%
 - Facilities Condition Index: 0.52
 - Deferred Maintenance: \$2.33 MM



*Facilities Condition Index (FCI): a metric of the avg. progress of a building through its useful life, where “0” is a brand new building and 1.0 is at the end of its useful life.

**Deferred Maintenance: an estimate of the cost of restoring a building to its original condition.

Nelson Family of Schools

- **Rosemont Elementary School**
 - Built: 1962
 - Operating Capacity: 154
 - Total Student Enrolment = 132
 - Elementary = 132
 - Building Metrics:
 - Capacity Utilization: 86%
 - Facilities Condition Index: 0.43
 - Deferred Maintenance: \$1.81 MM



*Facilities Condition Index (FCI): a metric of the avg. progress of a building through its useful life, where “0” is a brand new building and 1.0 is at the end of its useful life.

**Deferred Maintenance: an estimate of the cost of restoring a building to its original condition.

Nelson Family of Schools

- **South Nelson Elementary School**

- Built: 1960
- Operating Capacity: 199
- Total Student Enrolment = 223
 - Elementary = 223
- Building Metrics:
 - Capacity Utilization: 112%
 - Facilities Condition Index: 0.47
 - Deferred Maintenance: \$3.57 MM
- May be eligible for REP funding (as under the Existing Facilities Plan to build a new South Nelson on Trafalgar ground). Alternatively, South Nelson, already a great facility in the District, may continue to be used as is used currently.



*Facilities Condition Index (FCI): a metric of the avg. progress of a building through its useful life, where “0” is a brand new building and 1.0 is at the end of its useful life.

**Deferred Maintenance: an estimate of the cost of restoring a building to its original condition.

Nelson Family of Schools

- **Trafalgar Middle School**

- Built: 1924
- Operating Capacity: 575
- Total Student Enrolment = 413
 - Elementary = 280
 - Secondary = 133
- Building Metrics:
 - Capacity Utilization: 72%
 - Facilities Condition Index: 0.54
 - Deferred Maintenance: \$9.56 MM
- May be eligible for REP funding (replacement of South Nelson as under Existing Facilities Plan) or multiple SEP fundings (to fund a larger renovation).



*Facilities Condition Index (FCI): a metric of the avg. progress of a building through its useful life, where “0” is a brand new building and 1.0 is at the end of its useful life.

**Deferred Maintenance: an estimate of the cost of restoring a building to its original condition.

Nelson Family of Schools

- **L.V. Rogers Secondary School**
 - Built: 1956
 - Operating Capacity: 725
 - Total Student Enrolment = 698
 - Secondary = 698
 - Building Metrics:
 - Capacity Utilization: 96%
 - Facilities Condition Index: 0.27
 - Deferred Maintenance: \$7.48 MM



*Facilities Condition Index (FCI): a metric of the avg. progress of a building through its useful life, where “0” is a brand new building and 1.0 is at the end of its useful life.

**Deferred Maintenance: an estimate of the cost of restoring a building to its original condition.

Nelson Family of Schools

- **A.I. Collinson Elementary School - Leased to CSF**
 - Built: 1962
 - Building Metrics:
 - Facilities Condition Index: 0.16
 - Deferred Maintenance: \$1.01 MM



*Facilities Condition Index (FCI): a metric of the avg. progress of a building through its useful life, where “0” is a brand new building and 1.0 is at the end of its useful life.

**Deferred Maintenance: an estimate of the cost of restoring a building to its original condition.

Nelson Family of Schools

- **Gordon Sargent Elementary School - Leased to School House Day Care**
 - Built: 1971
 - Building Metrics:
 - Facilities Condition Index: 0.42
 - Deferred Maintenance: \$0.38 MM



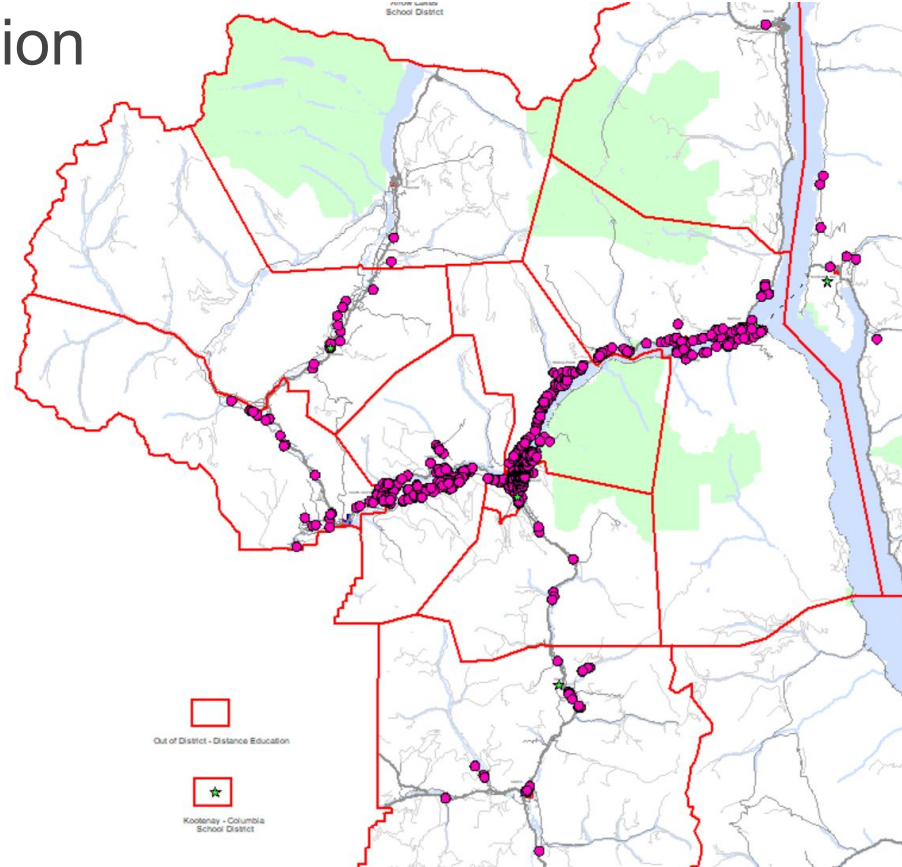
*Facilities Condition Index (FCI): a metric of the avg. progress of a building through its useful life, where “0” is a brand new building and 1.0 is at the end of its useful life.

**Deferred Maintenance: an estimate of the cost of restoring a building to its original condition.

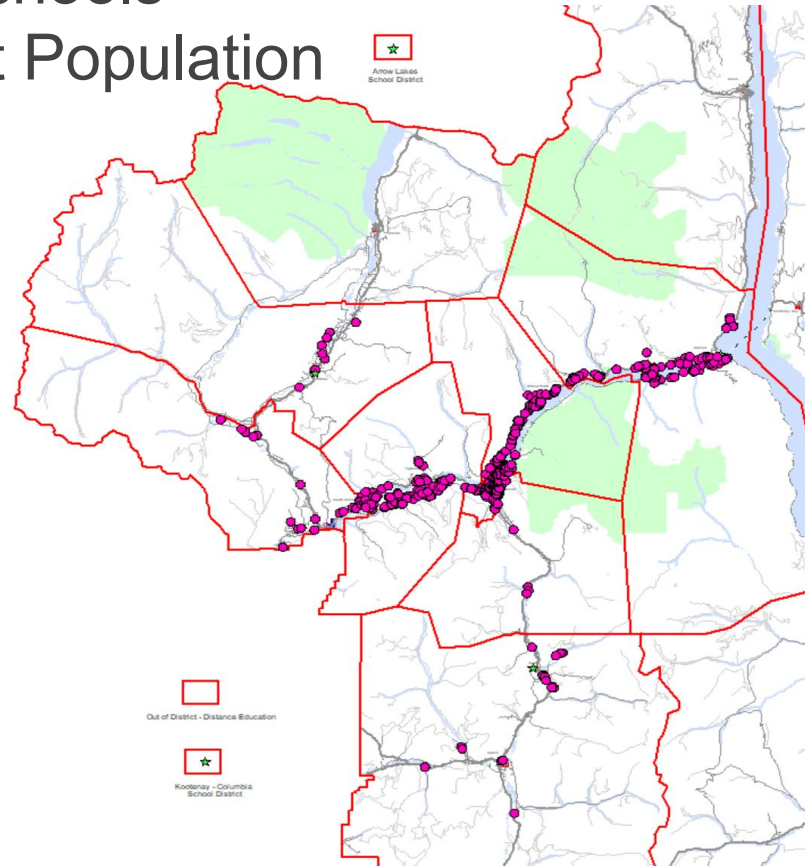
Nelson Family of Schools Enrolment



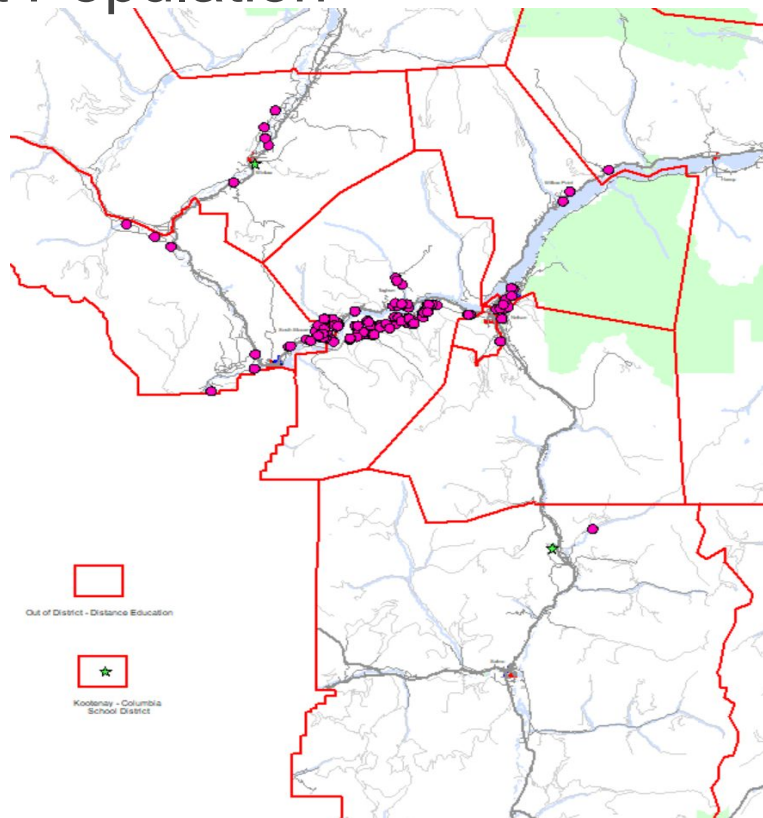
Nelson Family of Schools Student Population



Nelson Family of Schools Elementary Student Population



Nelson Family of Schools Homelinks Student Population



Blewett Elementary School Enrolment Projection

Total Enrolment Patterns 2016 - 2033
Blewett Elementary



The Out of Catchment enrolments in the lower grades of this school are much smaller than in the upper grades. Over the next few years, the higher cohorts will begin to exit the school and the smaller cohorts will replace them. The overall result of this projection is that Out of Catchment enrolment will decrease significantly.

Hume Elementary School Enrolment Projection

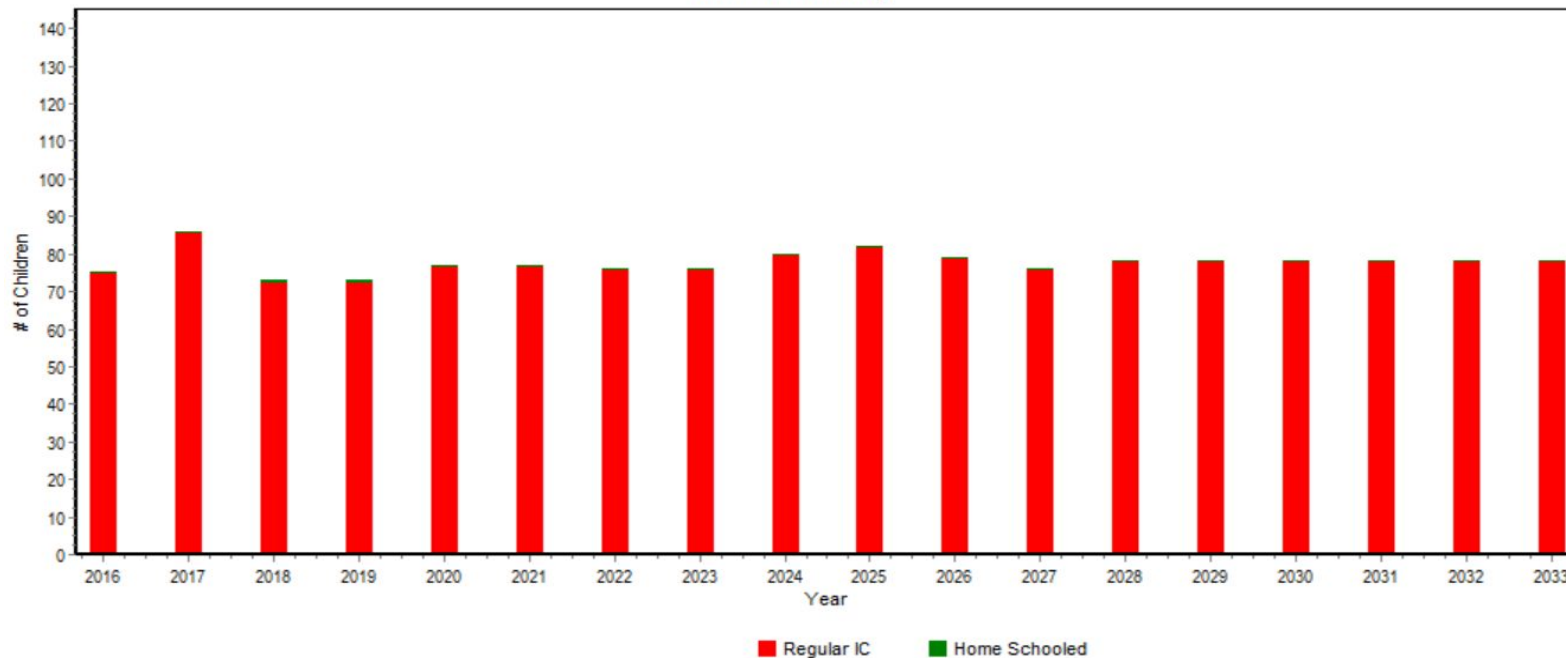
Total Enrolment Patterns 2016 - 2033
Hume Elementary



There was a significant decrease in Births this year that may or may not repeat itself in the future. Given that the children born this year will not enter kindergarten for 5 years, there will be time for an adjustment, if warranted, in the near future.

Redfish Elementary School Enrolment Projection

Total Enrolment Patterns 2016 - 2033
Redfish Elementary



Rosemont Elementary School Enrolment Projection

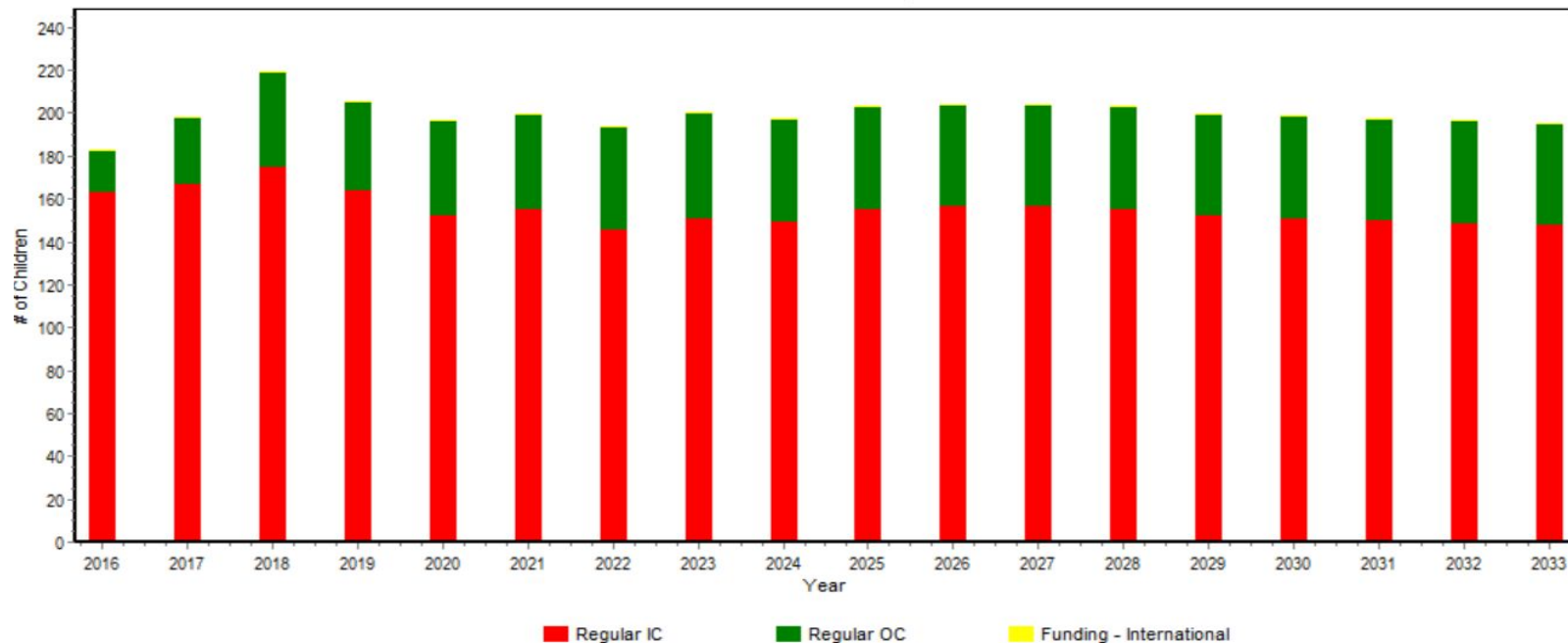
Total Enrolment Patterns 2016 - 2033
Rosemont Elementary



The kindergarten Participation rate has been volatile in recent years, causing difficulty in making an assumption about the future. Additionally, there was a significant increase in the grade 2 Participation rate this year, which may or may not be repeated in the future. Alternative assumptions should be explored in order to determine a range of future enrolment possibilities.

South Nelson Elementary School Enrolment Projection

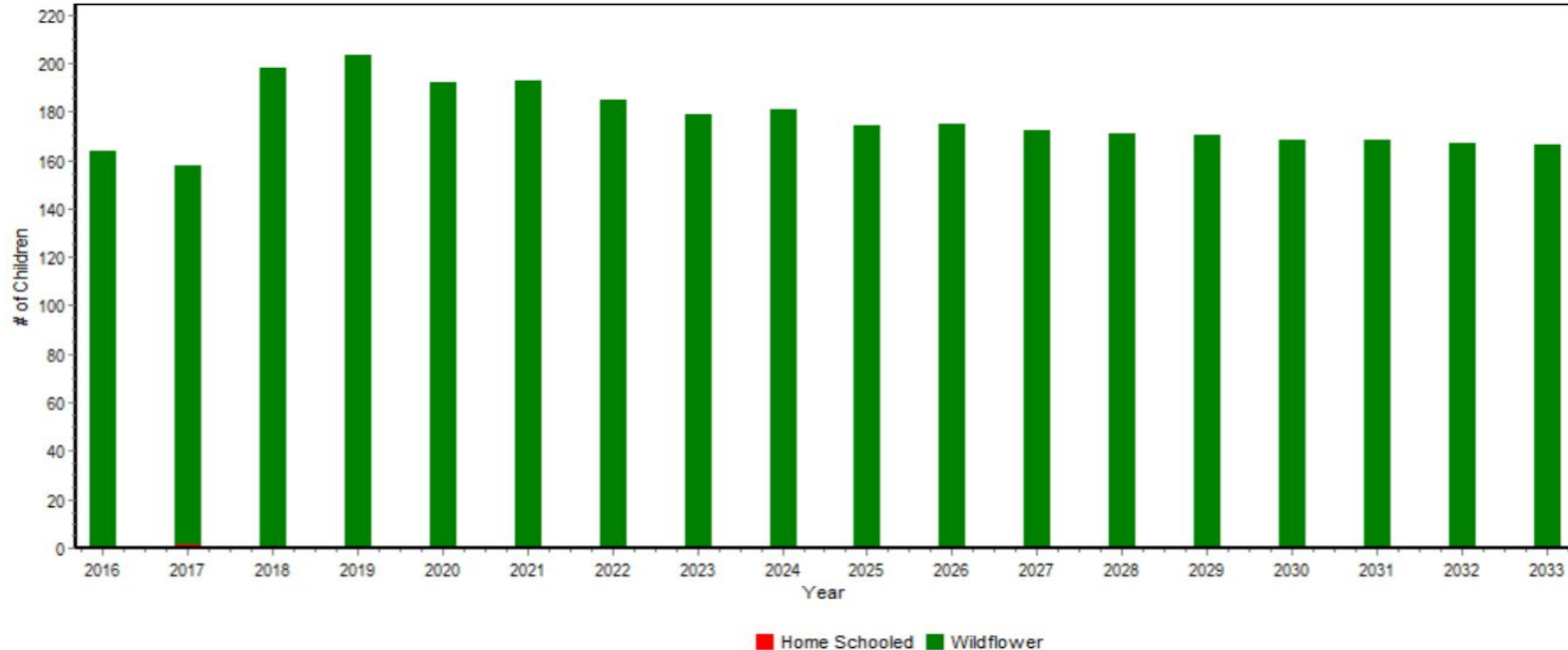
Total Enrolment Patterns 2016 - 2033
South Nelson Elementary



The total Out of Catchment enrolment has increased significantly over the last 2 years, and may continue to do so.

Wildflower School Enrolment Projection

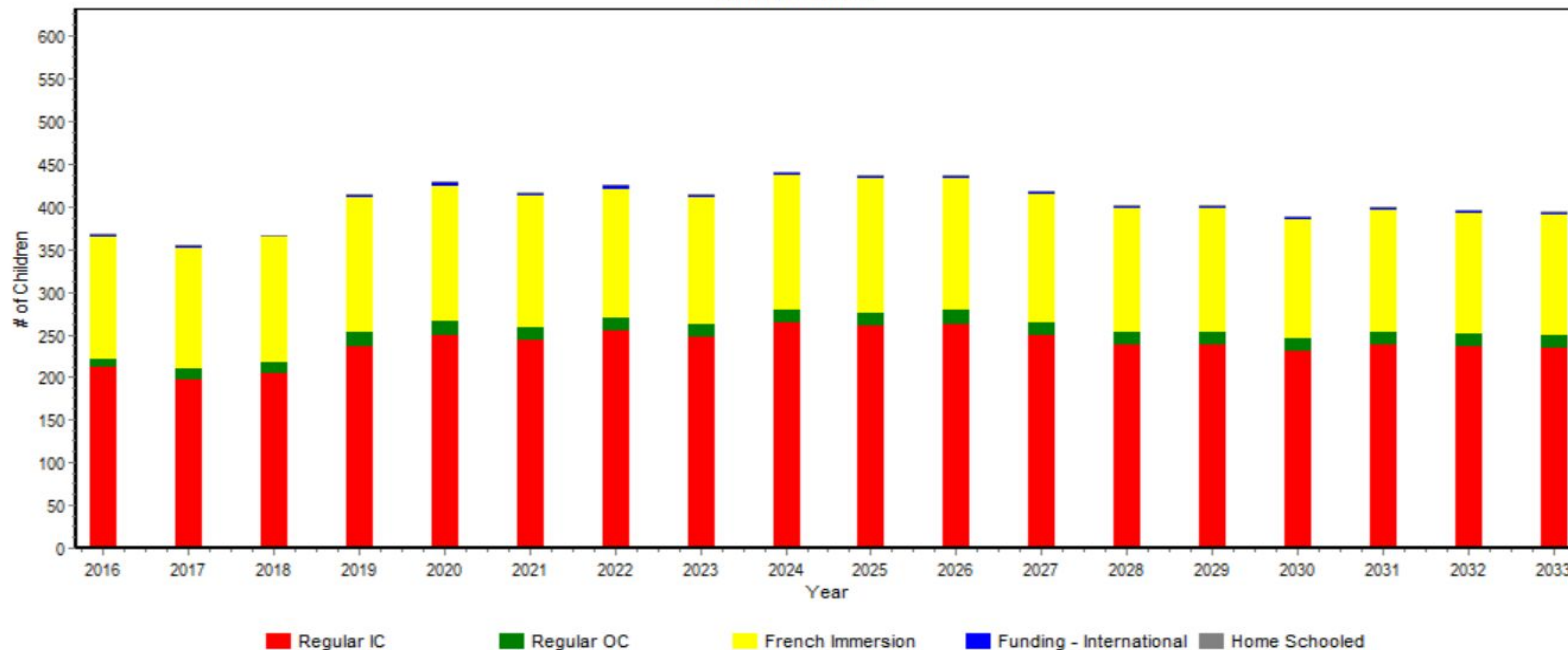
Total Enrolment Patterns 2016 - 2033
Wildflower School



The Wildflower program enrolment increased significantly in grade 7 this year, due to an additional school offering the program. The assumption used in this projection is for smaller future increases.

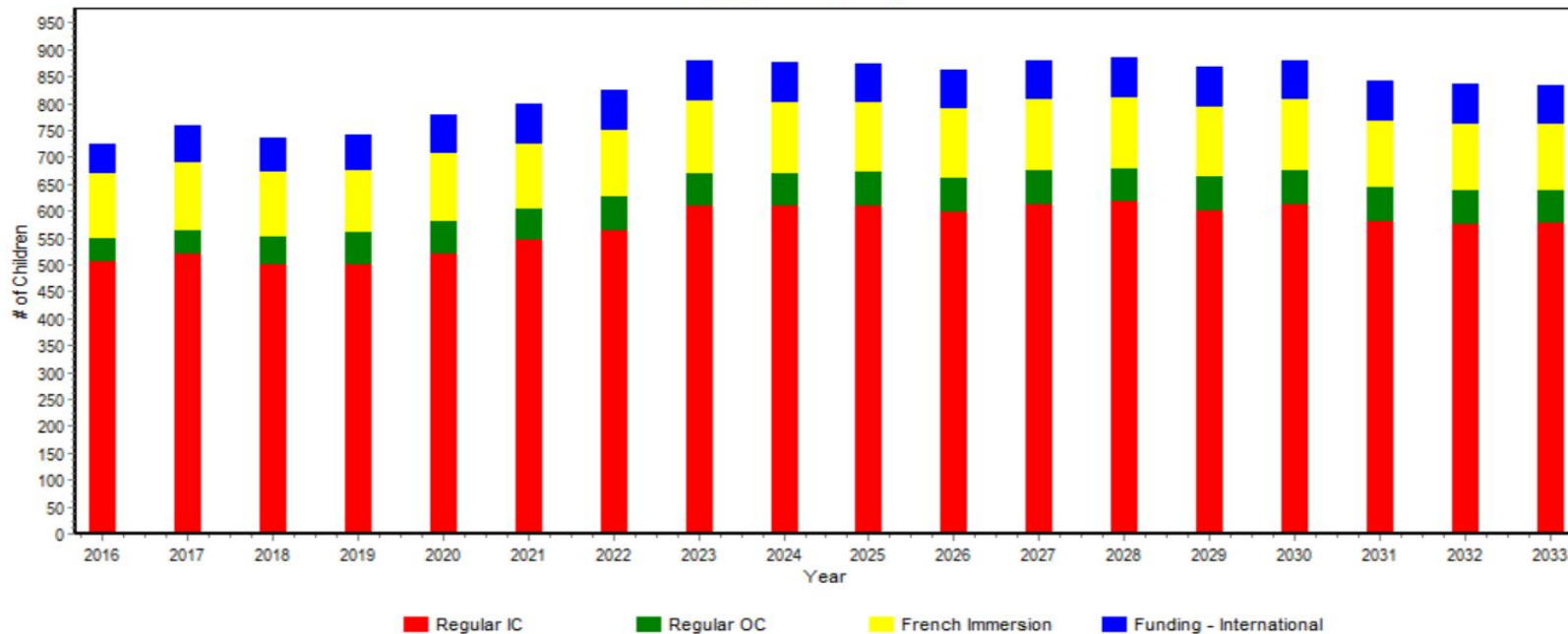
Trafalgar Middle School Enrolment Projection

Total Enrolment Patterns 2016 - 2033
Trafalgar Middle



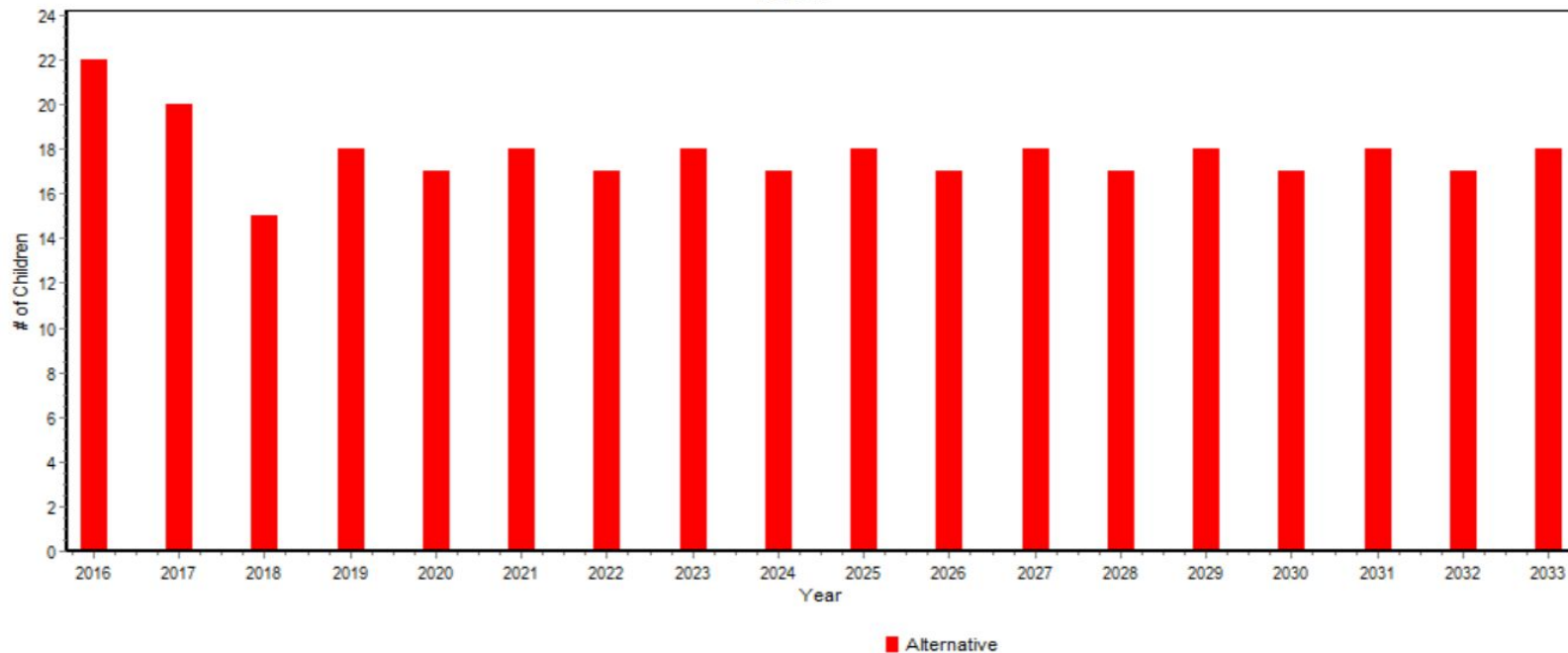
L.V. Rogers Secondary School Enrolment Projection

Total Enrolment Patterns 2016 - 2033
L.V. Rogers Secondary



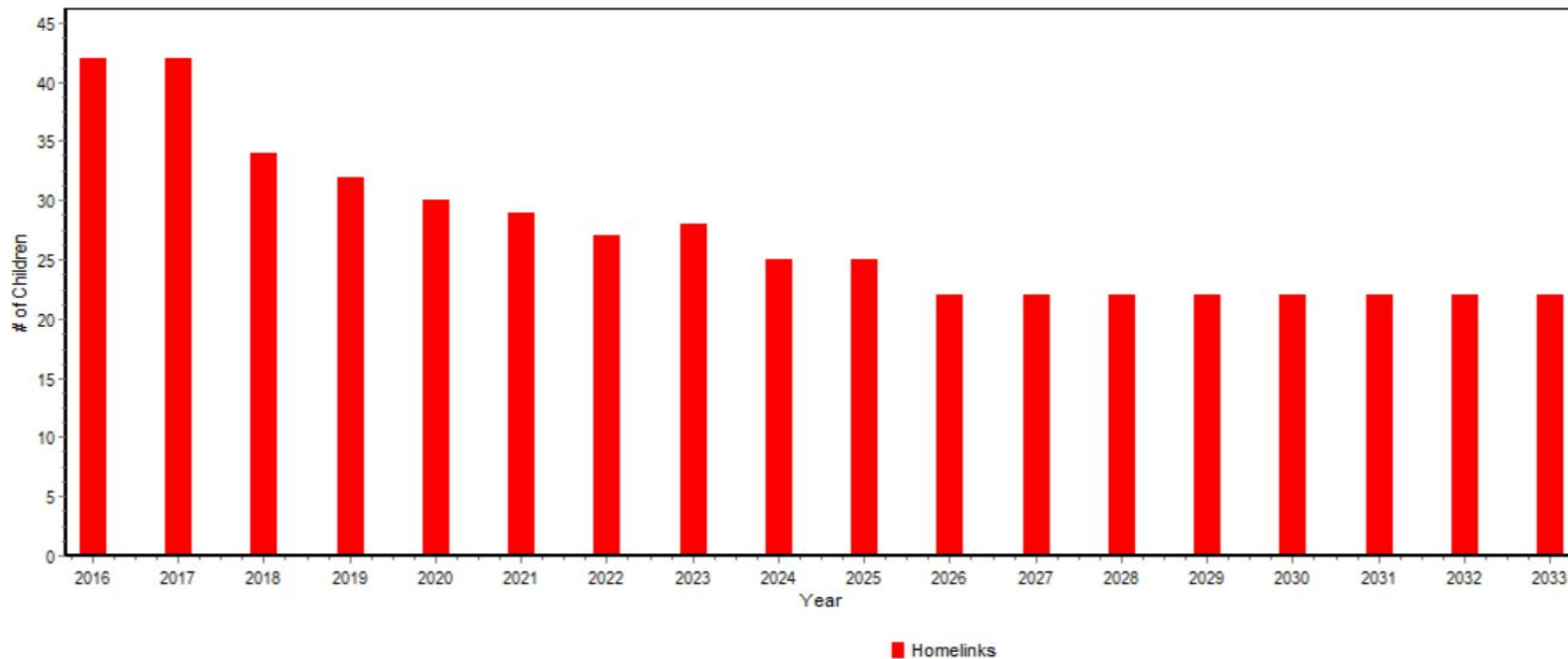
REACH Enrolment Projection

Total Enrolment Patterns 2016 - 2033
REACH

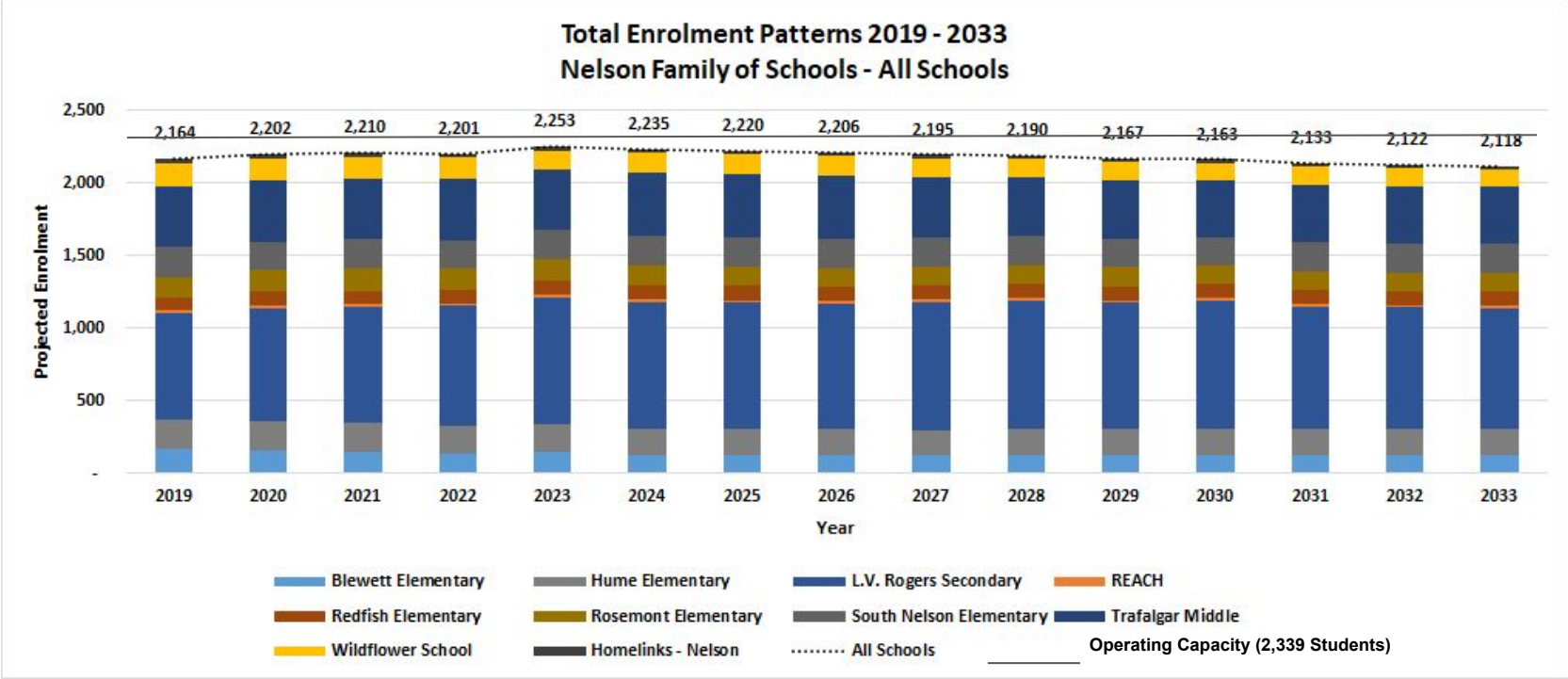


Homelinks Nelson Enrolment Projection

Total Enrolment Patterns 2016 - 2033
Homelinks - Nelson



Nelson Family of Schools Enrolment Projection



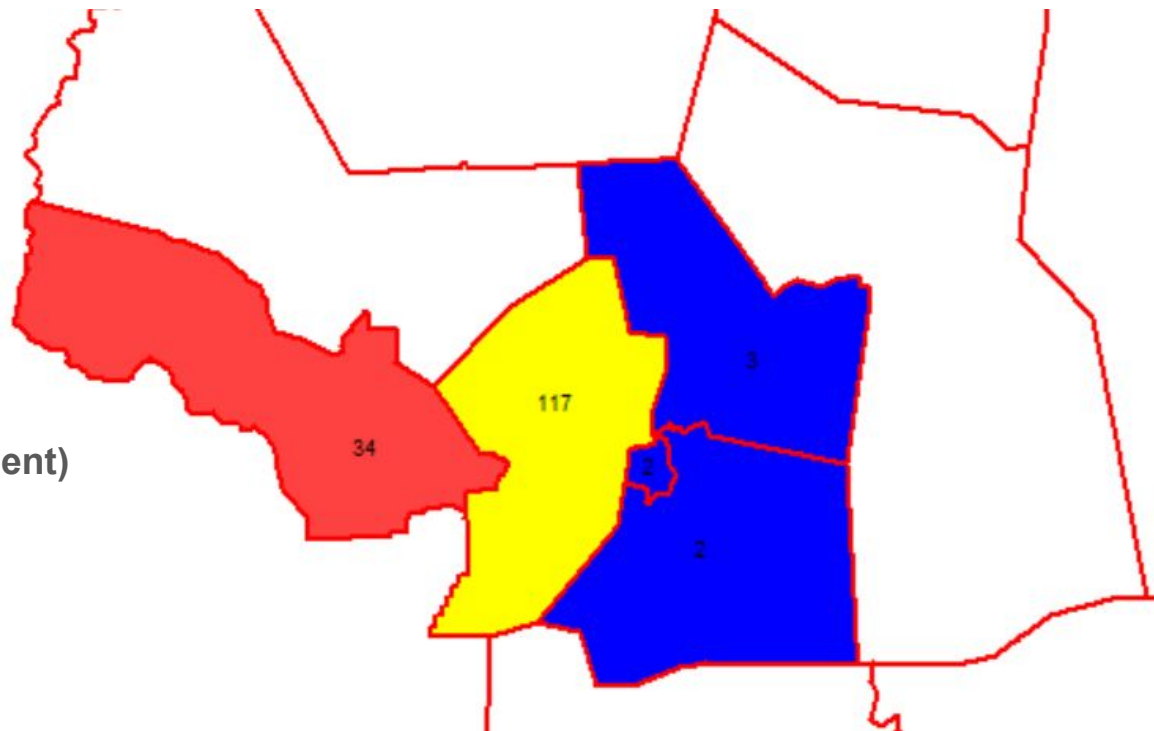
Nelson Family of Schools Catchments



Blewett Elementary School Students by Catchment

As at February 28, 2019:

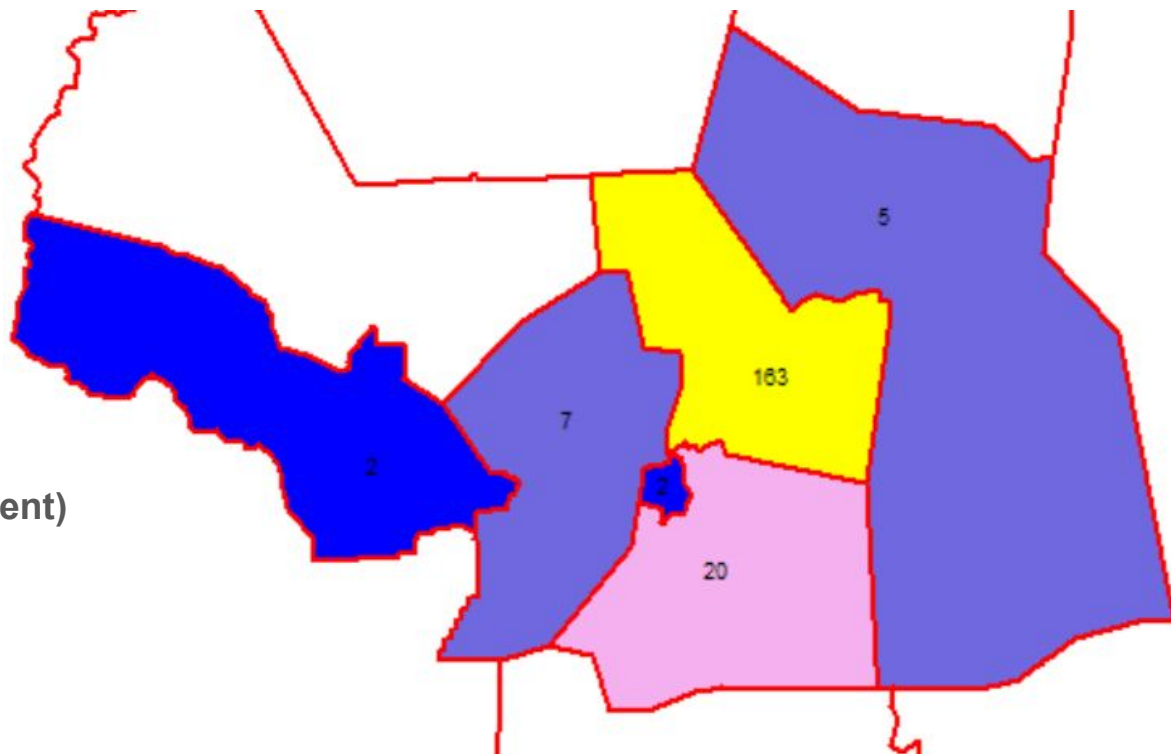
- 117 in-catchment
- 34 from Brent Kennedy
- 2 from Rosemont
- 2 from South Nelson
- 3 from Hume
- **159 TOTAL (42 out of catchment)**



Hume Elementary School Students by Catchment

As at February 28, 2019:

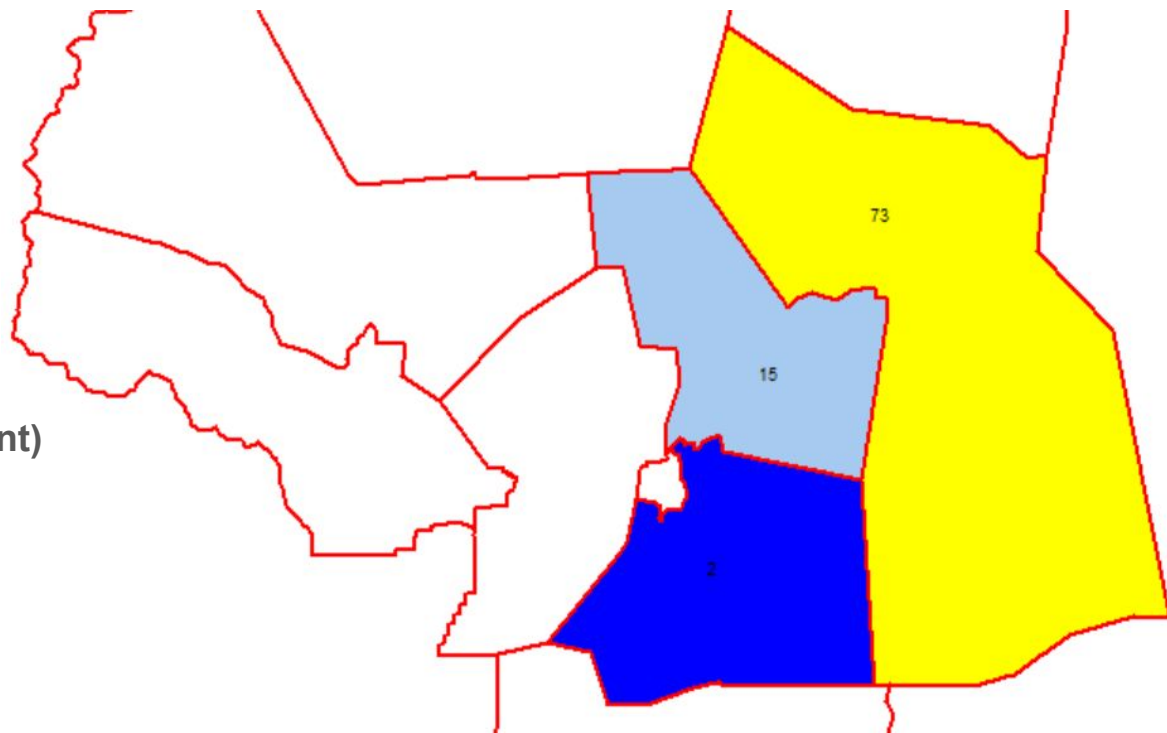
- 163 in-catchment
- 5 from Redfish
- 2 from Rosemont
- 20 from South Nelson
- 7 from Blewett
- 2 from Brent Kennedy
- **200 TOTAL (37 out of catchment)**



Redfish Elementary School Students by Catchment

As at February 28, 2019:

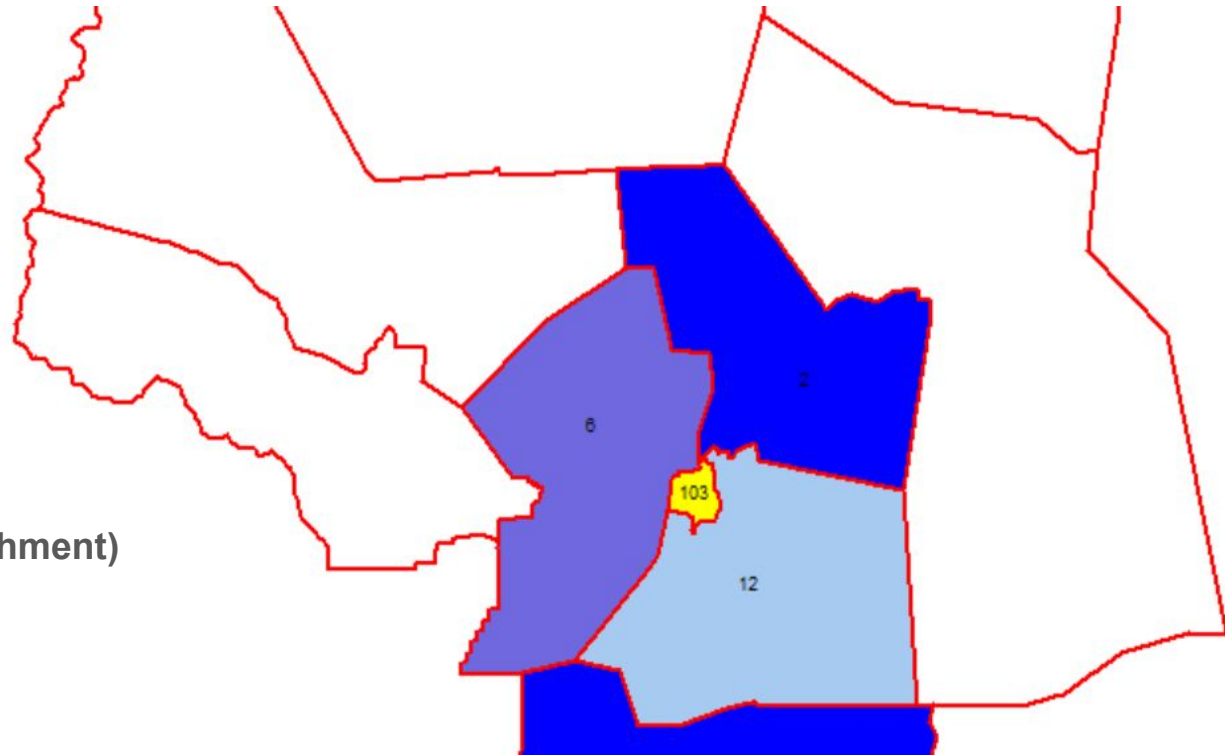
- 73 in-catchment
- 15 from Hume
- 2 from South Nelson
- **90 TOTAL (17 out of catchment)**



Rosemont Elementary School Students by Catchment

As at February 28, 2019:

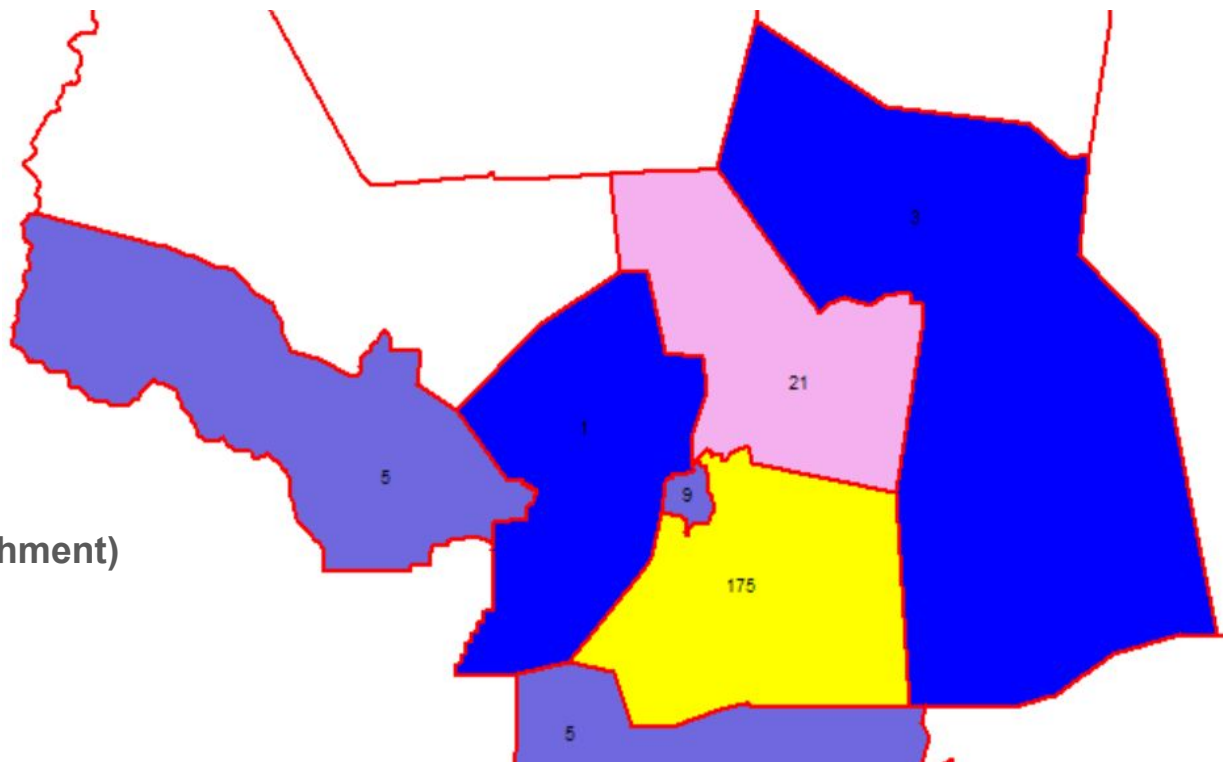
- 175 in-catchment
- 5 from Salmo
- 3 from Redfish
- 21 from Hume
- 9 from Rosemont
- 1 from Blewett
- 5 from Brent Kennedy
- **219 TOTAL (44 out of catchment)**



South Nelson Elementary School Students by Catchment

As at February 28, 2019:

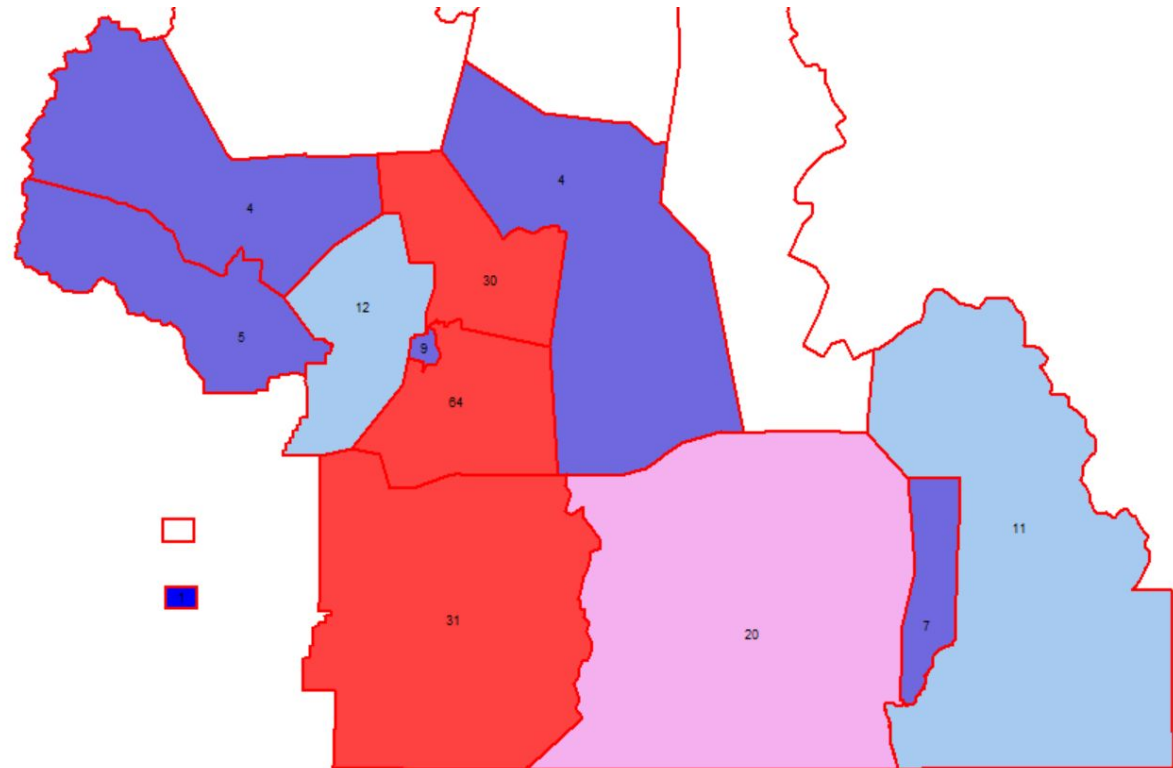
- 175 in-catchment
- 5 from Salmo
- 3 from Redfish
- 21 from Hume
- 9 from Rosemont
- 1 from Blewett
- 5 from Brent Kennedy
- **219 TOTAL (44 out of catchment)**



Wildflower School Enrolment by Catchment

As at February 28, 2019:

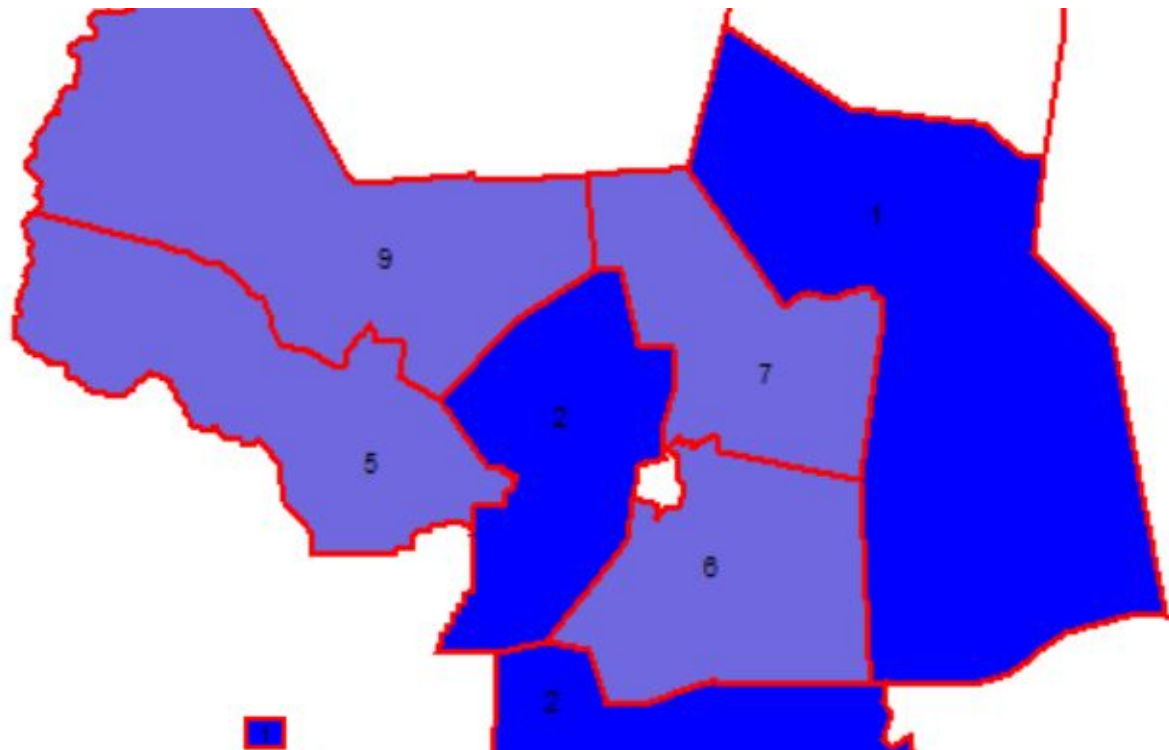
- 20 Adam Robertson
- 7 Erickson
- 11 Canyon Lister
- 31 Salmo
- 64 South Nelson
- 9 Rosemont
- 30 Hume
- 4 Redfish
- 12 Blewett
- 4 Winlaw
- 5 Brent Kennedy
- 1 SD20 (out-of-district)
- **198 TOTAL**



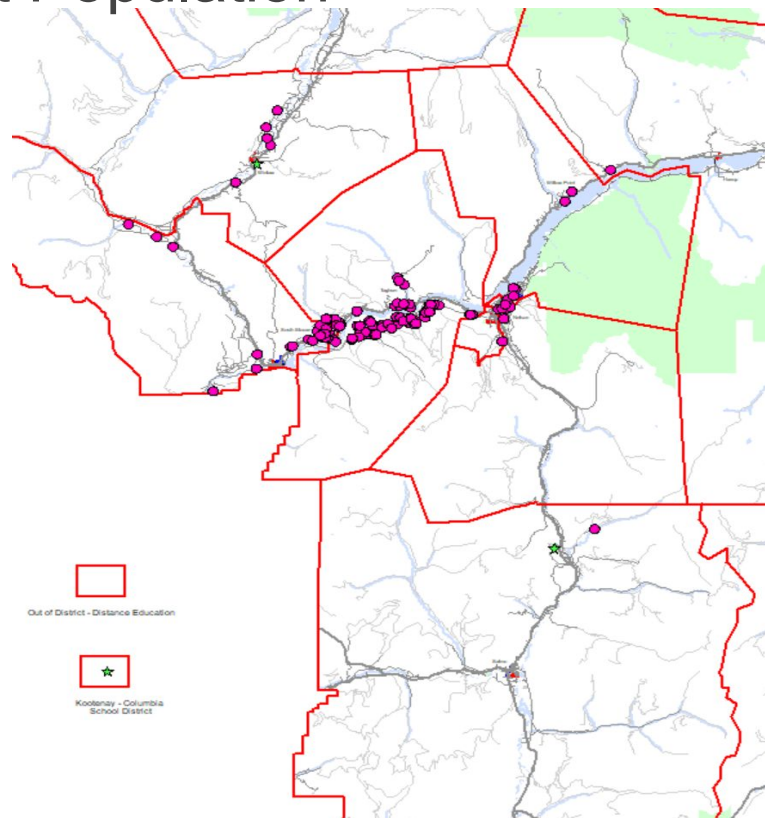
Nelson Homelinks Enrolment by Elementary Catchment

As at February 28, 2019:

- 9 from Winlaw
- 5 from Brent Kennedy
- 2 from Blewett
- 7 from Hume
- 1 from Redfish
- 6 from South Nelson
- 2 from Salmo
- 1 from SD20
- **34 TOTAL OF WHICH:**
 - 30 Grades K - 8
 - 4 Grades 9-11
 - 0 Grade 12



Nelson Family of Schools Homelinks Student Population



Nelson Family Elementary Schools Students by Catchment - Summary Table

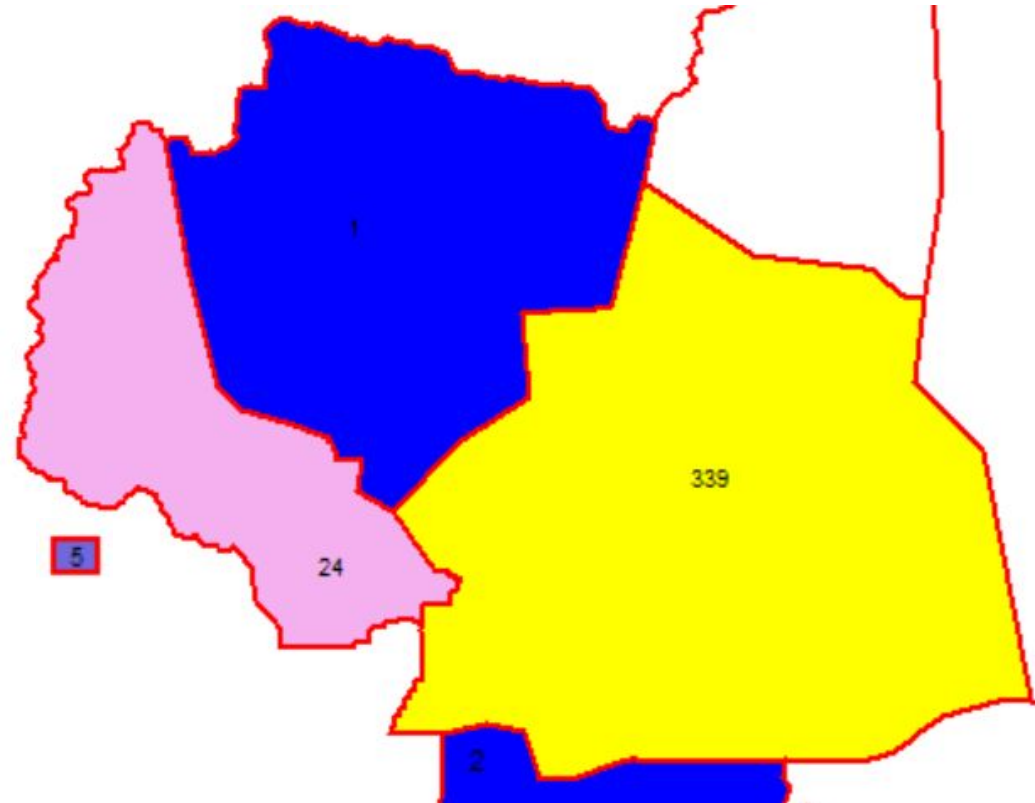


| Attendance Patterns - Grades K-5 Catchments | | | | | | | | | | | | | | |
|--|--------------------|--------------------------|-----------------|--------------------|---------------------|-------------------------|--------------------|------------------|-------------------|-----------------|-------------------------|-------------------------|----------------------|----------------------|
| Program/Identifier: All Program/Identifiers Grades: K, ONE, TWO, THREE, FOUR, FIVE, SIX, SEVEN | | | | | | | | | | | | | | |
| Read horizontally for "WHERE RESIDENTS GO" and vertically for "WHERE STUDENTS COME FROM" | | | | | | | | | | | | | | |
| School of Attendance | | | | | | | | | | | | | | |
| Catchment of Residence | Blewett Elementary | Brent Kennedy Elementary | Hume Elementary | Redfish Elementary | Rosemont Elementary | South Nelson Elementary | Homelinks - Nelson | Trafalgar Middle | Wildflower School | Catchment Total | Attend In-Catchment (#) | Attend In-Catchment (%) | Attend Elsewhere (#) | Attend Elsewhere (%) |
| Blewett Elementary | 117 | 5 | 7 | | 6 | 1 | 1 | 35 | 10 | 184 | 117 | 63.59% | 67 | 36.41% |
| Brent Kennedy Elementary | 34 | 149 | 2 | | | 5 | 4 | 19 | 4 | 247 | 149 | 60.32% | 98 | 39.68% |
| Hume Elementary | 3 | | 163 | 15 | 2 | 21 | 7 | 66 | 27 | 306 | 163 | 53.27% | 143 | 46.73% |
| Redfish Elementary | | | 5 | 73 | | 3 | 1 | 33 | 3 | 118 | 73 | 61.86% | 45 | 38.14% |
| Rosemont Elementary | 2 | | 2 | | 103 | 9 | | 48 | 8 | 174 | 103 | 59.20% | 71 | 40.80% |
| Salmo Elementary | | | | | 1 | 5 | 1 | 2 | 27 | 243 | 175 | 72.02% | 68 | 27.98% |
| South Nelson Elementary | 2 | 1 | 20 | 2 | 12 | 175 | 3 | 71 | 55 | 342 | 175 | 51.17% | 167 | 48.83% |
| W.E. Graham Community School | | | 1 | | | | | | | 55 | 38 | 69.09% | 17 | 30.91% |
| Winlaw Elementary | | | 9 | | | | 7 | 1 | 2 | 113 | 82 | 72.57% | 31 | 27.43% |
| Out of District - Arrow Lakes | | | | | | | 1 | | | 1 | 0 | 0.00% | 1 | 100.00% |
| Out of District - Kootenay - Columbia | 1 | 62 | 1 | | | | 1 | 2 | 1 | 85 | 0 | 0.00% | 85 | 100.00% |
| Total Enrolment | 159 | 227 | 200 | 90 | 124 | 219 | 26 | 277 | 137 | 2860 | | | | |
| Attend from Catchment(#) | 117 | 149 | 163 | 73 | 103 | 175 | 0 | 0 | 0 | | 1725 | | | |
| Attend from Catchment(%) | 73.58 % | 65.64 % | 81.50 % | 81.11 % | 83.06 % | 79.91 % | 0.00 % | 0.00 % | 0.00 % | | | 60.31 % | | |
| Attend Cross Boundary(#) | 42 | 78 | 37 | 17 | 21 | 44 | n/a | n/a | 137 | | | | 1135 | |
| Attend Cross Boundary(%) | 26.42 % | 34.36 % | 18.50 % | 18.89 % | 16.94 % | 20.09 % | n/a | n/a | 100.00 % | | | | | 39.69 % |

Trafalgar Middle School Grade 6-8 Students by Catchment

As at February 28, 2019:

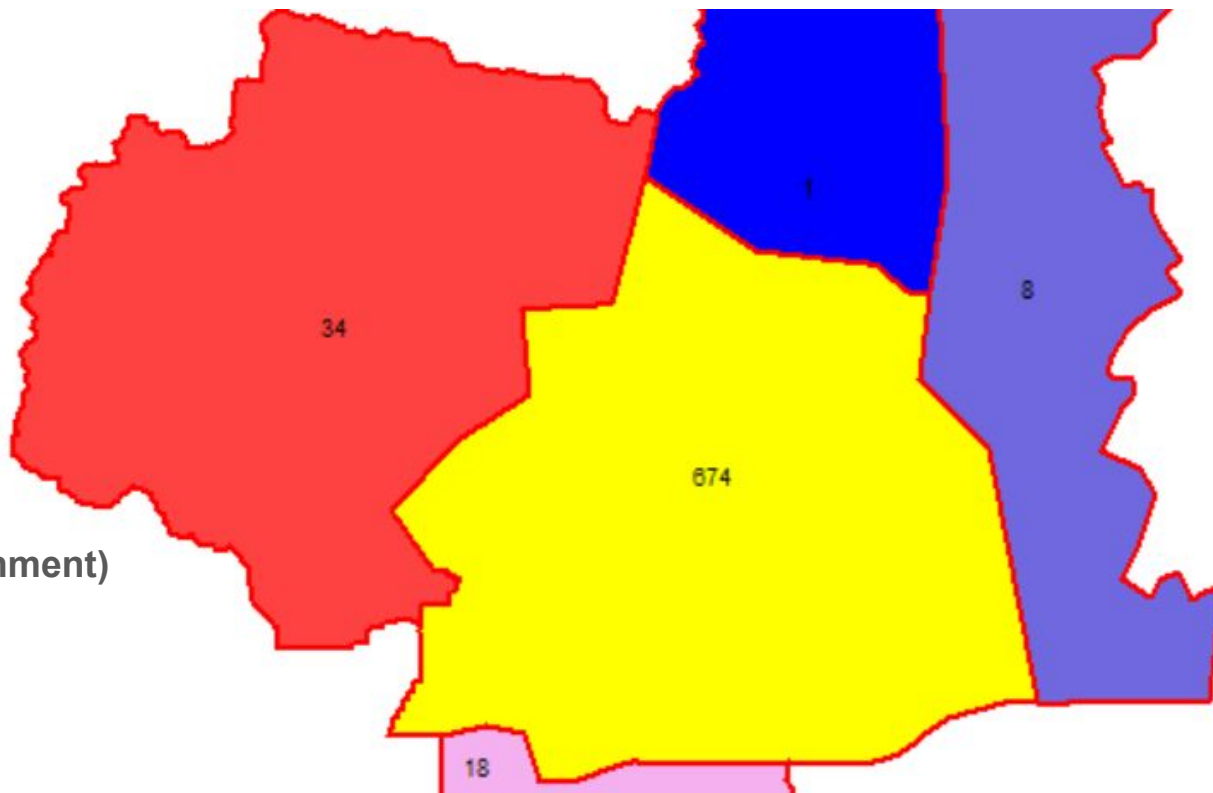
- 339 in-catchment
- 24 from Mount Sentinel
- 1 from WE Graham
- 2 from Salmo
- 5 from SD20
- **371 TOTAL (32 out of catchment)**



L.V. Rogers Secondary School Students by Catchment

As at February 28, 2019:

- 674 in-catchment
- 34 from Mount Sentinel
- 18 from Salmo
- 8 from Crawford Bay
- 1 from JV Humphries
- **746 TOTAL (72 out of catchment)**



Policy 410: School Choice & Catchment

- **Current policy is working!**
- **Board policy states that that student admission to schools is guided by the following principles:**
 - Maximize the number of students able to attend their catchment area school.
 - **Maximize student's and parent's ability to choose school and education program which best meets education needs of student.**
 - Admission process should enable District staff to plan the allocation of space and instruction resources to best accommodate demand and minimize the adjustments required at the beginning of the year.
 - Board reserves the right to alter school catchment boundaries.
- **Board policy sets forth rules for priority of transfer requests, and any ties come down to the time the transfer request is made.**

Nelson Family of Schools

Areas of Focus



Blewett Expansion Project

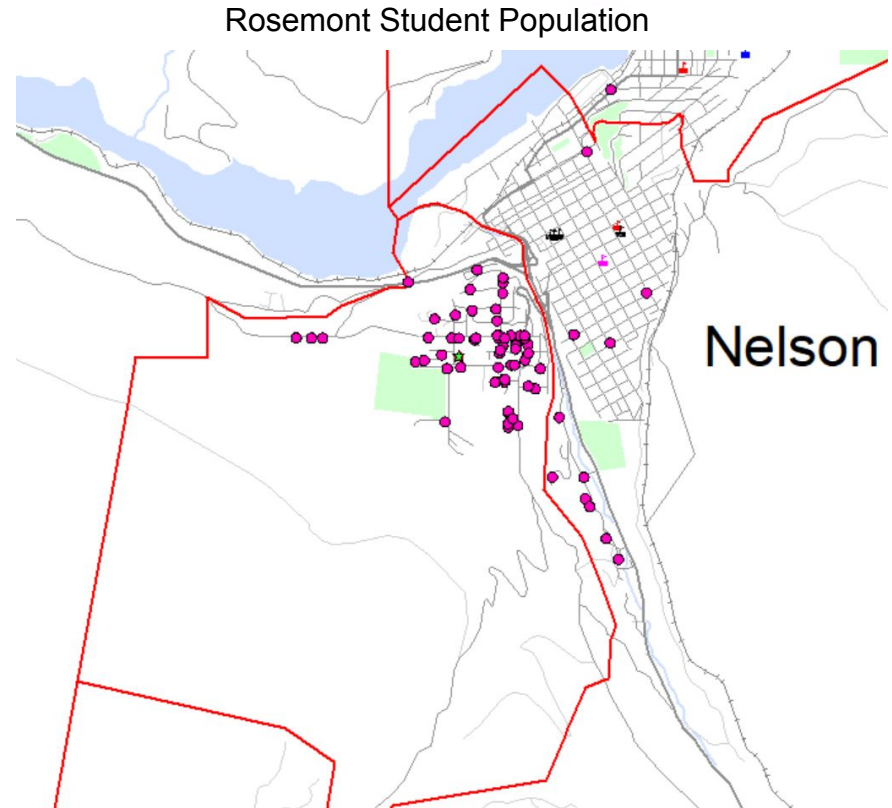
- Pre-Approval from Ministry of Education Received March 2019
- Project Definition Report (PDR) Submission Jan, 2020
- \$5.3 million project to add:
 - 112 K-7 Seats
- Benefits Include:
 - Adds capacity to Nelson Family of Schools
 - Will lower average FCI in Nelson Family of School

Blewett Expansion Possible Footprint



Rosemont Catchment

- Students Living along highway seem to *always* choose Rosemont.
- A minor catchment change could be considered.



Trafalgar Facilities Condition

- Discussion has moved away from tear-down and replace in current facilities plan.
- Public feedback regarding heritage value of Old Trafalgar section.
- Facility Design Features “worth conserving”
 - Large classroom sizes
 - Special purpose classes (Shop, arts, music)
 - Large gym
- Condition improvements will be a priority focus by Operations Department in Nelson Family of Schools



Nelson Family of Schools Facilities Plan Surveys & Feedback



Nelson Family of Schools

Survey Responses at Spring Consultation Meeting 2019



What is working well?

- Tech hub: entrepreneurship, student learning, cross pollination with industry, university model
- Multi-age & self-directed model at Wildflower
- Size & location of buildings, proximity to nature
- Playgrounds
- Every school has their own library
- More outdoor components, more time in nature
- Great teachers & staff, cooperate and address parent concerns
- Strong community support
- Diversity & choice of Elementary schools
- Flexibility (Redfish going to Gr. 7)
- Out of Catchment system
- Trafalgar's shop, music program, foods
- South Nelson's music program
- Collaboration & sharing

Nelson Family of Schools

Survey Responses at Spring Consultation Meeting 2019



What could you let go of?

- Keep 6/7 splits at rural schools from Trafalgar breaks funding models
- Properties the Board is considering disposing seem to make sense
- Let go of strict focus on academics and focus on overall well being of children
- School spaces used in daytime by only one demographic of the community
- Poorly maintained spaced in marginal locations
- Open multi-use class spaces, instead of actual classrooms
- Traditional, stale interior architecture
- Every building not utilized by the District
- Leaking Trafalgar gym, creates a bog in outdoor fields
- Trafalgar's past negative reputation, do a turnaround
- Properties not used for education
- Competition for students
- Middle school
- Let go of new build for Trafalgar, use existing building
- Too many different programs, choice is great but can cause us to fund too many pots

Nelson Family of Schools

Survey Responses at Spring Consultation Meeting 2019



What are your DREAMS?

- Parent support
- Optimize the facilities we have, renovate existing landmarks
- Be flexible with configuration within the District
- Facility supports inclusion - wheelchair, elevators
- Partnerships - soccer, basketball, City of Nelson gym, family place, seniors groups
- Community facilities attached to schools - community hub, multipurpose facility, kitchen, running track, theatre, seniors drop in center, child care center, sports clubs,
- Solar farm on roof to generate power for the community
- CORE options - applied skill, fine arts
- More outdoor/nature time built into curriculum - wilderness trips, right of passage program, outdoor ed, less time in indoor/urban environments
- Learning spaces - open, bright spaces, playgrounds, airy interiors, integrate natural spaces, outdoor covered learning areas, flex space, quiet multi-purpose rooms, better outdoor playground at Central
- Soccer field
- Interactive whiteboards, better access to technology, lab school with UBC - WKTEP
- Daycare in school
- Spacious parking lots in front of every school
- No ice, snow, winter problems
- Expand french immersion program
- Smaller class sizes
- LVR rebuild on Trafalgar land. Gr. 8-12. Elementary K-7.

Nelson Family of Schools

Survey Responses at Spring Consultation Meeting 2019



What resources would be needed for your DREAMS?

- Lots of outdoor learning, access the great outdoors
- Build open spaces, design to illicit creative expression from the greater community
- Playground space at central, use natural materials (wood, sand, logs), running track
- Better integration with existing city facilities and resources (squash, soccer, swimming pool, civic theatre, library)
- Electrical upgrade at most schools for technology
- Heating system upgrades
- Washrooms updated at Trafalgar
- Double door system to prevent heat loss
- Concerned Central School priority admin/Board function, parking issue, school should be allocated same outdoor space as schools of similar size
- Money, imagination, ideas from existing successful models (i.e. Sweden)
- Community involvement, public partnerships, publicity/awareness in media that Schools are open to corporate partnerships
- Commitment from the Board
- Well resourced & supported
- Better classroom accommodations at LVR

Thought Exchange Survey Top Thoughts - All Schools



What are your thoughts on the strengths and needs of our school facilities?

Our outdoor activity spaces at all our schools are a real asset. Recent Elementary playgrounds and the partnership tennis courts at LVR are great! Promoting activity & healthy lifestyles is important starting at a young age, and continuing into adulthood, especially with the lure of electronics.



All schools in our family of schools are a major part of the communities where they are located. They bring people together.



LVR is excessively cramped. What is the plan here? No room for students to study other than the library. Every classroom full. Classes cancelled because of no space. Academics held in tech classes.



Staffs ability to persevere through our aging facilities is certainly a strength. Many of our buildings are 60+ years old with few updates. Teachers are made to adapt to outdated spaces for a far changing curriculum. Well done!



All Thoughts: [click here](#)

Thought Exchange Survey

Top Thoughts - Nelson Family of Schools



What are your thoughts on the strengths and needs of our school facilities?

Note: Displays top thoughts rated by Nelson Family of School participants.

LVR is excessively cramped. What is the plan here? No room for students to study other than the library. Every classroom full. Classes cancelled because of no space. Academics held in tech classes.



There is not enough room at LVR since DESK moved in. Regular classes are running in a shop class, a textile class, and a room the size of a closet. Having a regular class in a shop class is a severe safety concern. Unfortunately, there is no other choice. Perhaps make LVR a 10-12 school again.



Staffs ability to persevere through our aging facilities is certainly a strength. Many of our buildings are 60+ years old with few updates. Teachers are made to adapt to outdated spaces for a far changing curriculum. Well done!



Our outdoor activity spaces at all our schools are a real asset. Recent Elementary playgrounds and the partnership tennis courts at LVR are great! Promoting activity & healthy lifestyles is important starting at a young age, and continuing into adulthood, especially with the lure of electronics.



All Thoughts rated by Nelson Family of Schools: [click here](#)

Survey - Thought Exchange



Please tell us what you think!

Add your ideas and thoughts here:

my.thoughtexchange.com/#537341911

Some Questions about Facilities to Get You Started:

- What is working well in your Family of Schools?
- What is not working well in your Family of Schools?
- What could you let go of at your school or Family of Schools?
- What are **Your Dreams** for the Future?
- What resources are needed to make these Dreams successful?