

Long-Range Facilities Planning

➔ Kaslo Family of Schools Consultation
Video Conference Meeting February 9, 2022



Territorial Acknowledgement



We acknowledge, respect and honour the First Nations in whose traditional territories the Kootenay Lake School District operates and all Aboriginal people residing within the boundaries of School District No. 8.



SD8 Long-Range Facilities Planning



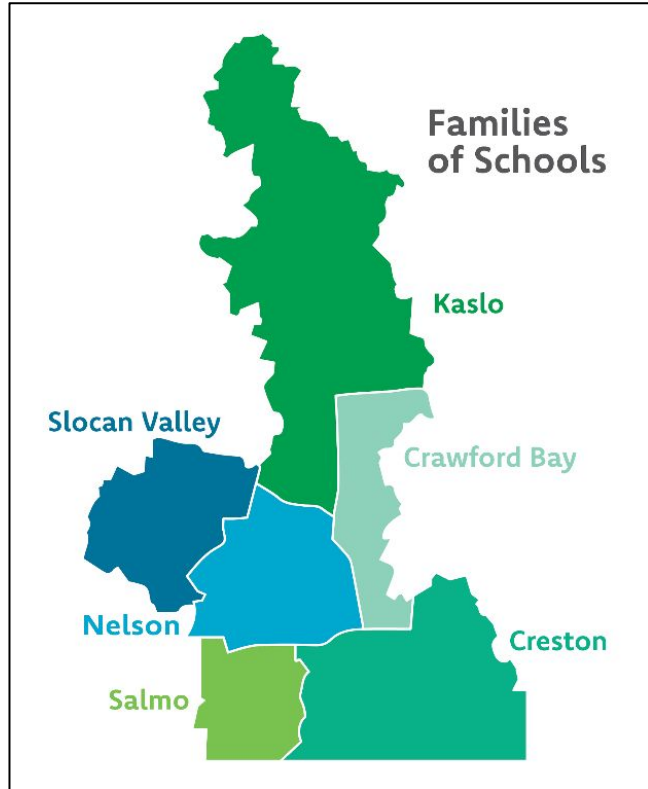
The goal of SD8's Long-Range Facilities Planning is to create the best possible Learning Environments for our students and staff factoring in facilities, enrolment projections, educational program requirements, and the diverse community needs and aspirations throughout our Families of Schools.

SD8 Facilities Planning Process

- Existing Long Range Facilities Plan Adopted December 10, 2019
- Plans are reviewed and updated annually
- Each plan update includes a review of:
 - Long Range Enrolment Projections
 - Educational Programming Requirements
 - Facilities Condition Assessments
 - Capacity Utilization
- Per Board resolution, Staff consults in each Family of School annually about facilities.



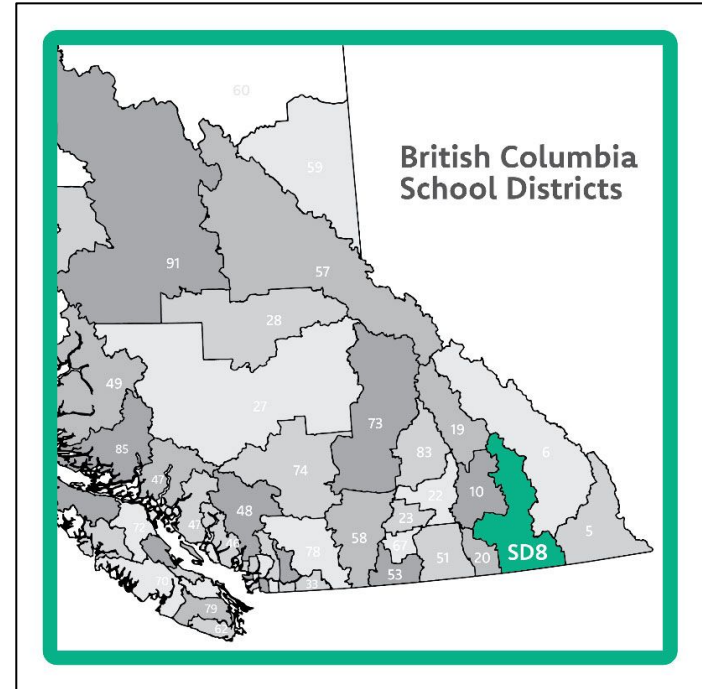
SD8 Families of Schools



Each of SD8's six Families of Schools represent a unique geographic area where, due to proximity, cross-enrolment trends amongst schools are a factor, and facilities Capacity Utilization can be looked at regionally for the purposes of facilities planning.

SD8 Location & Geography

Located in the southern interior of British Columbia, Canada, SD8 serves a number of individual and diverse communities including Crawford Bay, Creston, Kaslo, Meadow Creek, Nelson, Salmo, Slocan, South Slocan, Winlaw, Wynndel, Yahk and the surrounding rural areas, within a large geographic area consisting of two time zones.



SD8 Location & Geography



There are many unique challenges faced in delivering educational services throughout the District, resulting from its geography and the diversity of communities, in and around the lake and rivers of the Columbia Basin, and the highest highway pass in the province (Kootenay Pass).

The District has a range of quasi-urban schools to rural/remote schools, and a variety of school configurations to best deliver innovative and excellent educational services to its students.

Facilities & Land Summary

All SD8 Properties

- **Board-owned Properties:**
 - 30 Major Land Parcels
 - 44 Buildings
 - 23 School Buildings
 - 5 Modular Buildings Used by Schools
 - 11 Operations Buildings, Garages or Pump Houses
 - 5 Leases to Licensed Daycares or CSF93 (Francophone School District):
 - 2 Properties: Al Collinson and Gordon Sargent
 - 3 Ancillary Buildings at Brent Kennedy, LV Rogers and Salmo Elementary
- **Leased Properties:**
 - The Board leases three properties to run programs.

Emergent Facilities Plans

SD8 Properties Under Consideration for Sale or recently sold



Property Interest	Location	Status
• Former School Board, 570 Johnstone Rd	Nelson, BC	Sold Feb 8, 2021
• Former Al Collinson Elementary	Nelson, BC	Leased to CSF93 School District
• Former Gordon Sargent Elementary	Nelson, BC	Leased to School House Daycare
• Yahk Elementary	Yahk, BC	Sold Feb 1, 2022
• Retallack Land	Retallack, BC	Conditionally Sold
• Ymir Land	Ymir, BC	To be Listed for Sale
• Kin Park	Creston, BC	Sold Feb 4, 2022
• Tennis Courts & Pool Land	Salmo, BC	N/A

Long-Range Enrolment Projections

All SD8 Students

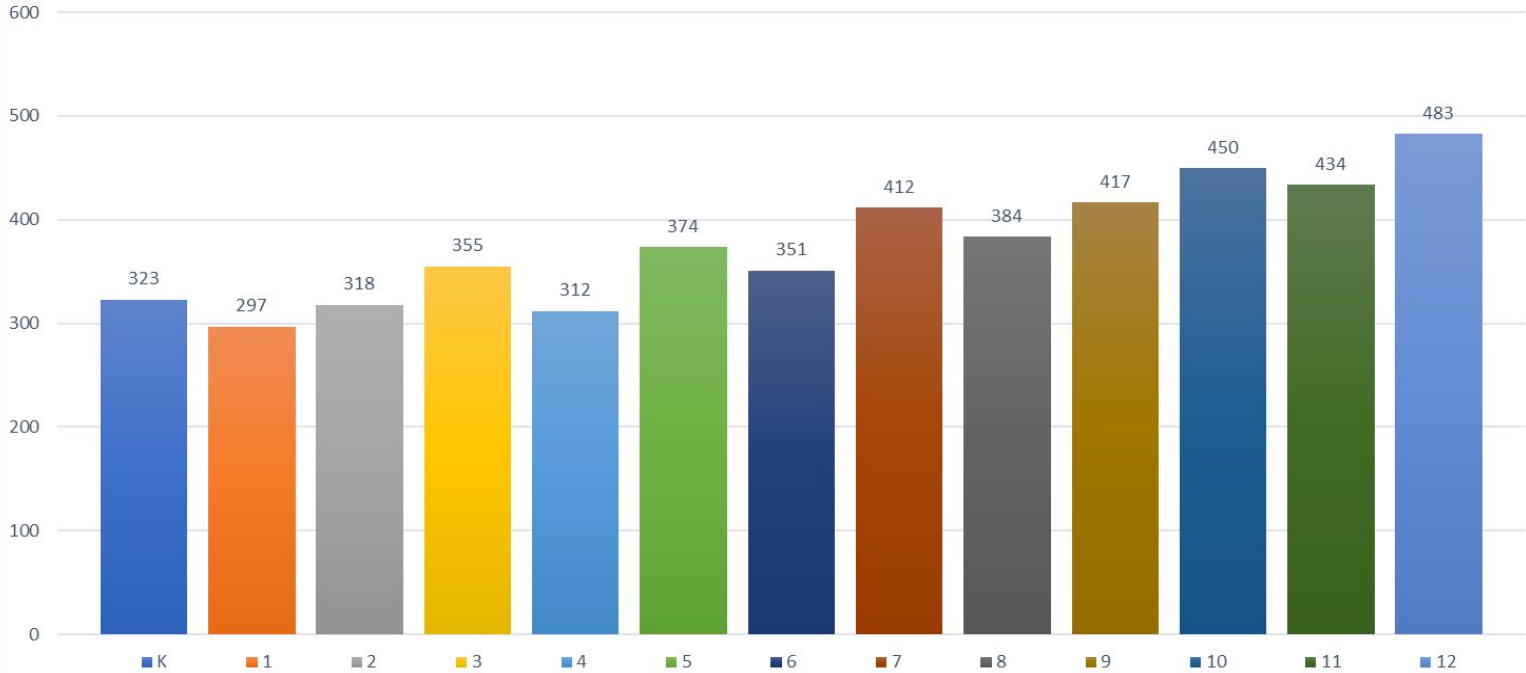


- **Current Year District Enrolment (September, 2021):**
 - ~4,911 students (Headcount), including 283 Elev8 DESK students
 - ~4,742 student (FTE), including 111 Elev8 DESK students
- **Future-Years Enrolment:**
 - Enrolment is projected to decline significantly next year
 - Long-term enrolment projections show a continual decline over the next 6 years and then stabilizing

Actual District Enrolment By Grade 2021-22



Full time equivalent (FTE) Class Distribution for the 2021-22 Year



Facilities & Enrolment Projections

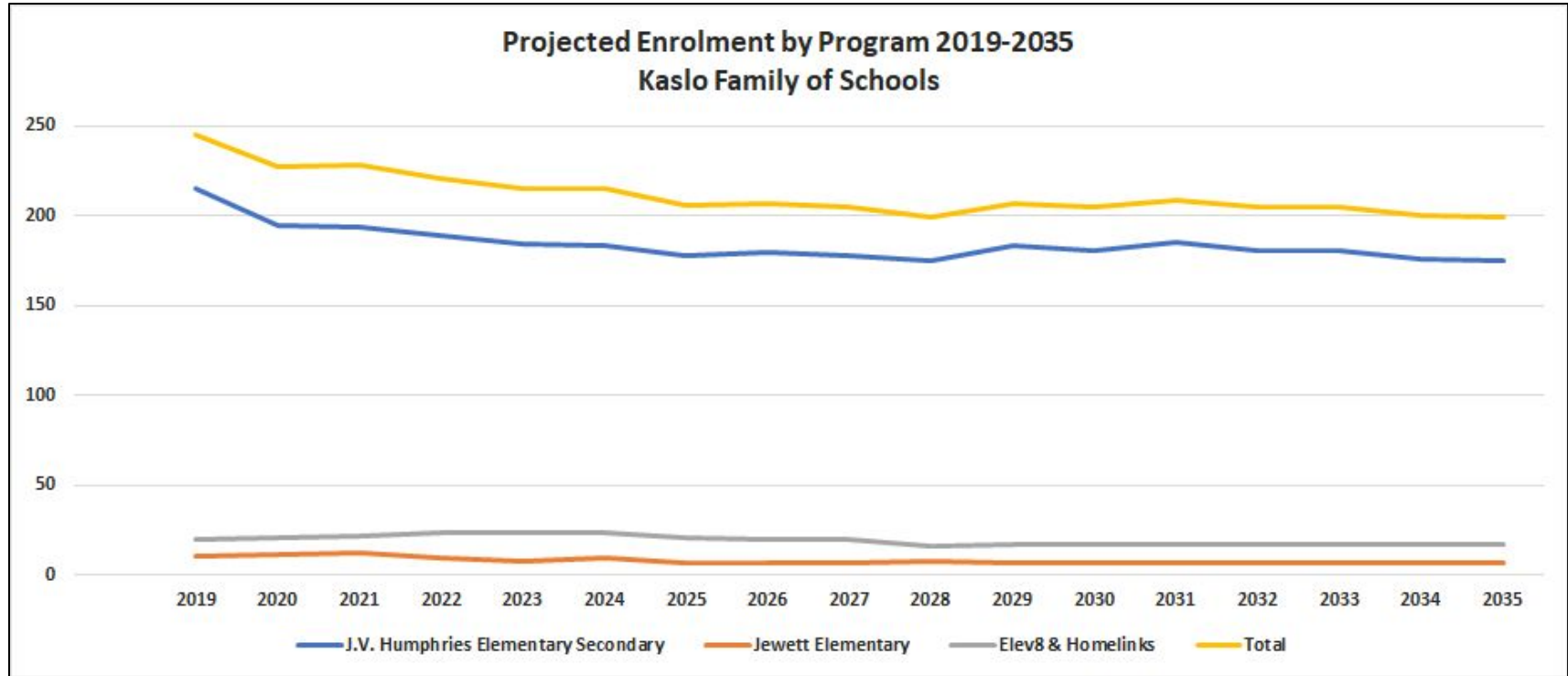
Kaslo Family of Schools



- **Three Sites / Four Buildings / Two Schools:**
 - J.V. Humphries Elementary/Secondary School
 - Jewett Elementary School
 - Jewett Storage Building
 - Kaslo Maintenance Building/Bus Yard
- **Total Operating Capacity of Kaslo Family of Schools = 451**
- **Total Enrolment (FTE) in Family of Schools = 217**
 - 208 = J.V. Humphries
 - 9 = Jewett Elementary School
 - 21 = Kaslo Homelinks

Long-Range Enrolment Projections (By Baragar)

Kaslo Family



Facilities Condition Index & Capacity Utilization

SD8 Averages



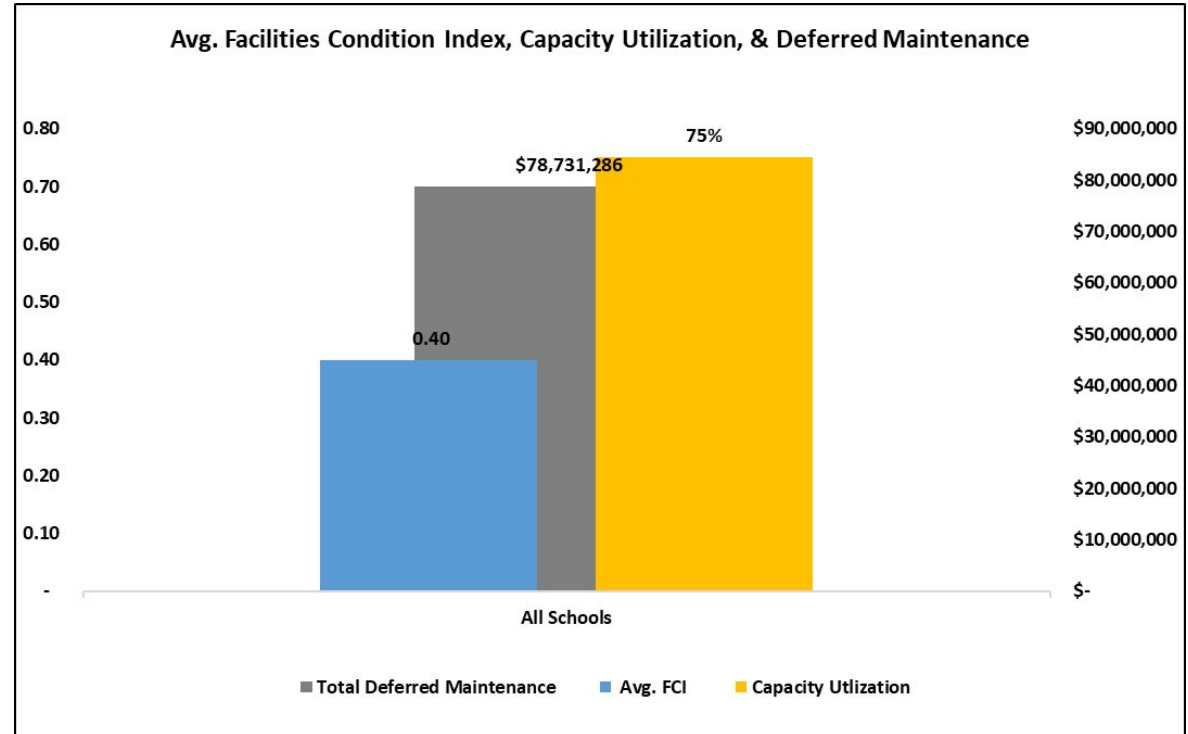
SD8 Averages:

FCI: 0.40

Capacity Utilization: 75%

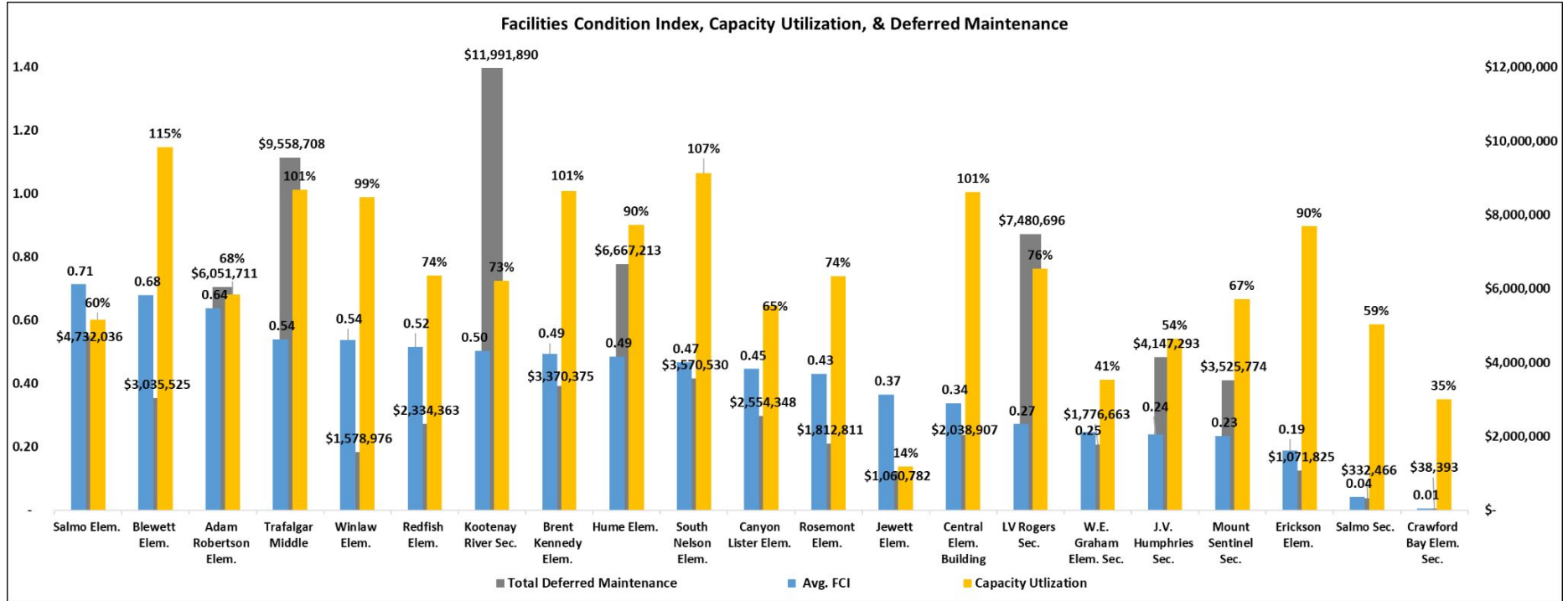
*Facilities Condition Index (FCI): a metric of the avg. progress of a building through its useful life, where “0” is a brand new building and 1.0 is at the end of its useful life. Estimate as at June, 2019.

**Deferred Maintenance: an estimate of the cost of restoring a building to its original condition as at June, 2019.



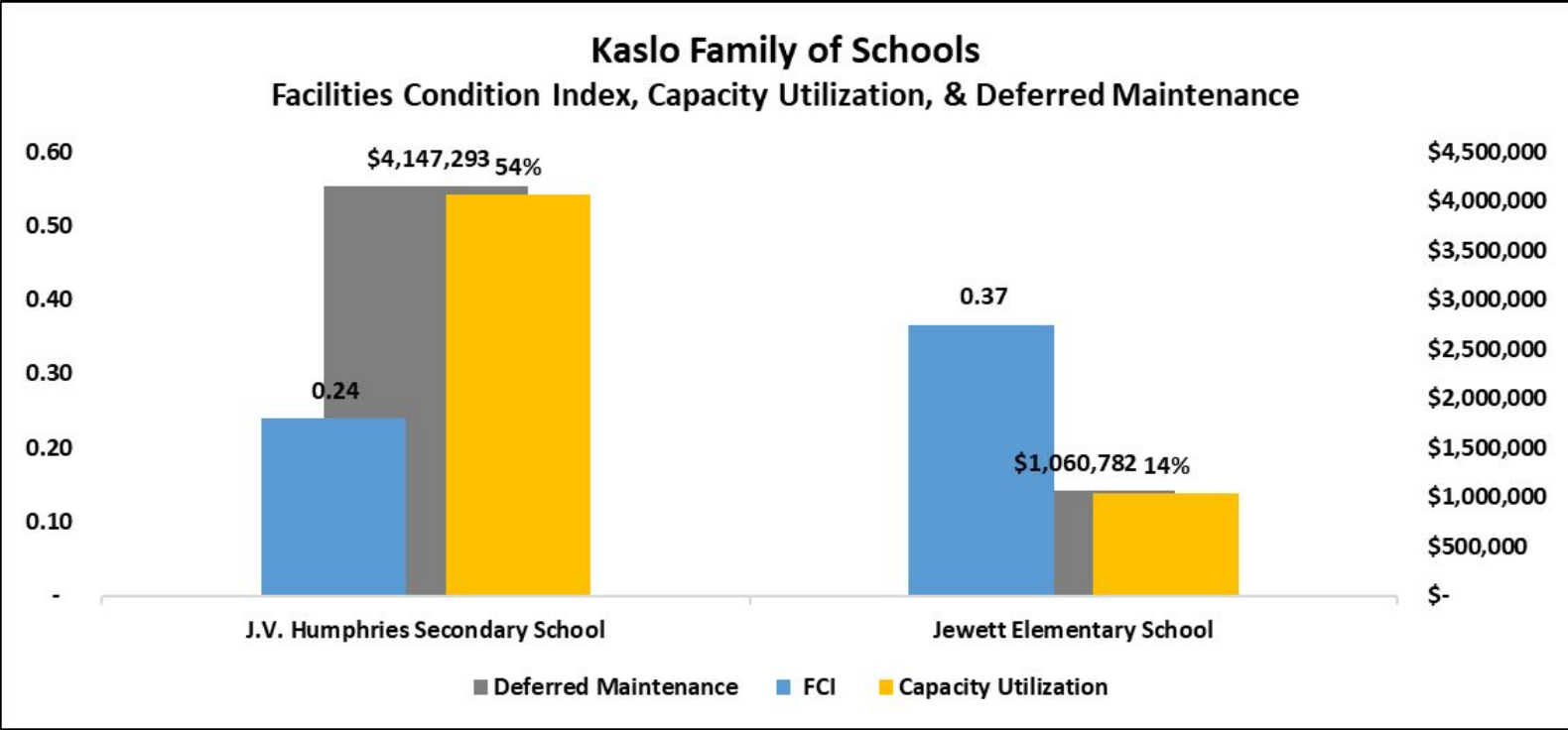
Facilities Condition Index & Capacity Utilization

All SD8 Schools



Facilities Condition Index & Capacity Utilization

Kaslo Family of Schools



School Profiles

JV Humphries Elementary/Secondary School

- Location: Kaslo
- Built: 1994
- Operating Capacity: 386
- Total Student Headcount = 209
- Total Student Enrolment (FTE) = 208
 - Elementary = 112
 - Secondary = 96
- Homelinks Enrolment = 21
- Building Metrics:
 - Capacity Utilization: 54%
 - Facilities Condition Index*: 0.24
 - Deferred Maintenance**: \$4.1 MM



*Facilities Condition Index (FCI): a metric of the avg. progress of a building through its useful life, where "0" is a brand new building and 1.0 is at the end of its useful life. Estimate as at June, 2019.

**Deferred Maintenance: an estimate of the cost of restoring a building to its original condition as at June, 2019.

School Profiles

Jewett Elementary School

- Location: Meadow Creek
- Built: 1946
- Operating Capacity: 65
- Total Student Headcount/Enrolment = 9
 - Elementary = 9
- Building Metrics:
 - Capacity Utilization: 14%
 - Facilities Condition Index*: 0.37
 - Deferred Maintenance**: \$1.1 MM



*Facilities Condition Index (FCI): a metric of the avg. progress of a building through its useful life, where “0” is a brand new building and 1.0 is at the end of its useful life. Estimate as at June, 2019.

**Deferred Maintenance: an estimate of the cost of restoring a building to its original condition, as at June, 2019.

Maintenance & Technology Update

Kaslo Family of Schools



- **JVH:**
 - Completed maintenance past 5 years: entire roof replacement, new playground, security system replaced, flooring repairs and replacements, demolition of former music building and site remediation, gym floor refinishing with school logo, boys shower room upgrade, skylight room abatement and roofing repair, gym lighting upgrade (in progress),
 - Prospective maintenance: DDC (HVAC control) upgrade project approved, flooring repairs and replacements, interior painting, replaced 3 circulating pumps, decommission 1 septic tank, replaced heat pump, replaced wood shop and bus garage compressors,
 - Completed technology past 5 years: Laptop for Learning for Gr 7/10, Virtual computer lab for media arts pilot, new phone system, upgraded WIFI to 1 access point in every classroom, new high-end projector in drama room, upgraded video surveillance.
- **Jewett:**
 - Completed maintenance past 5 years: roof repairs, water treatment (UV) installed, new water leaching bed, water main valve replacement, furnace replacement and DDC controls upgraded.
 - New phone system and upgraded WIFI

Emergent Facilities Plans

Kaslo Family of Schools

- J.V. Humphries, a K-12 school in Kaslo, and Jewett Elementary, a K-6 school in Meadow Creek has an overall Capacity Utilization under 50%, which is expected to further decline slightly over the horizon of our enrolment projections.
- The enrolment at Jewett Elementary has recently decreased to 9 students and a StrongStart program operates at the school (but not operating during COVID-19 restrictions).
- The District will periodically review the use of the Jewett facility, including student enrolment and StrongStart participation, and continue its consultations with the local community as to how and where to best continue providing educational services to the students of the Meadow Creek area.



Facilities - Public Feedback Request



Please tell us what you think!

Email Teri.Stoneman@sd8.bc.ca

Some questions for you about facilities:

- What is working well in your Family of Schools?
- What is not working well in your Family of Schools?
- What could you let go of at your school or Family of Schools?
- What are Your Dreams for the Future?
- What resources are needed to make these Dreams successful?