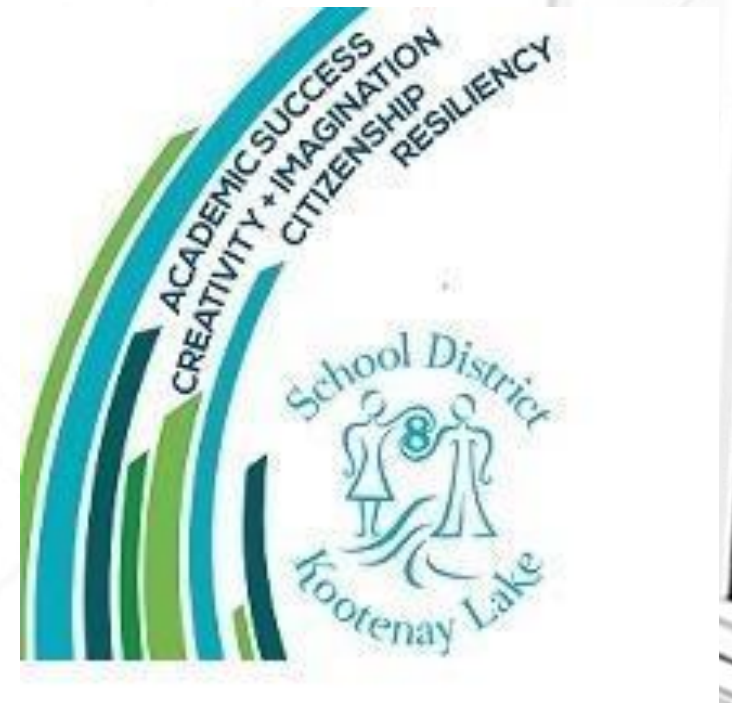


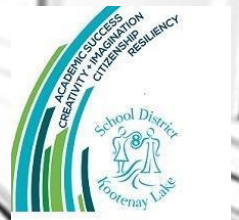
# Long Range FACILITIES PLANNING

School District No. 8  
Public Consultation  
Consideration of School Closure:  
Trafalgar Middle School  
June 21, 2016



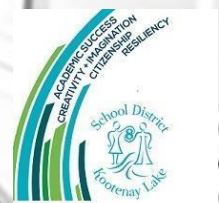
# Work Done Since May 3

- Staff to staff meetings:
  - SD8 Staff and City of Nelson Staff
  - SD8 Staff and DESK Vice-Principal and LVR/Wildflower Principal
- Trustee meetings:
  - Consultation meeting in each community with consideration of closure
  - Consultation meeting with all municipal, local government and Lower Kootenay Band (June 17)
- Appraisal of South Nelson Elementary School: pending
- Blewett Addition: Engineered/Design Aid Completed



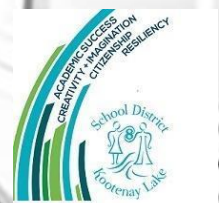
# Impact of Scenario - Overall

- Rebuild South Nelson Elementary on Trafalgar Property
- Blewett Addition (classroom and common areas)
- Central Renovation (elevator and office conversion to classroom)
- Close Trafalgar
- Reconfigure Nelson Family of Schools: K-7 at Elementary and 8-12 at LVR
- Wildflower Expansion (56 student addition)
- Central to house:
  - Expanded Wildflower
  - Nelson Homelinks
  - French Immersion Grade 6-7
  - Reach
  - DESK
- Provides common configuration in larger communities: Creston and Nelson (K-7 and 8-12)
- Technology services could move to the Nelson Transportation Office or co-locate at City of Nelson (SD8 servers currently co-located at City offices)



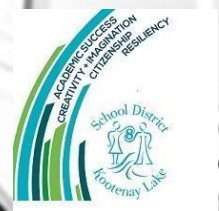
# Impact of Scenario - Educational

- Eliminates one transition for majority of students, except French Immersion
- Keeps younger students in elementary settings and in neighbourhoods; perceived more “play based children” for a longer period of time
- May reduce number of middle school learning options for intermediate grades.
  - May be addressed by:
    - providing additional district allocations to elementary schools from operating funds savings for curricular costs (ticket, entrance costs, resources in the community as well as bussing) in order to enhance opportunities. Creston currently operates under a K-7 model so should also be considered if additions are added to Nelson elementary schools; or
    - Replicate Creston’s approach to providing enhanced learning opportunities to senior elementary grades 6 and 7 (ie elementary band program)



# Impact of Scenario - Financial

- Provides operational and capital savings
- Requires capital injection: addition to Blewett, installation of elevator and conversion of office space to classroom space at Central, and new build of SNES
- Operating Savings: \$279,785 annually (on-going)
- Initial Capital Outlay: **\$4,250,000 (UPDATED)**
  - Blewett Addition \$3,750,000 (engineered with design aid requirements)
  - Central Renovation \$500,000
- Elimination of Future Deferred Maintenance: \$15.5 million (one-time)

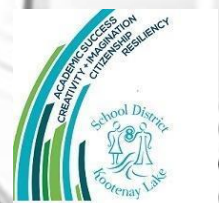


# Impact of Scenario - Operational

- Good case for renewal with 91% capacity utilization and poor facility condition in Nelson

# Impact of Scenario – Capacity Utilization

School	Status Quo	New N-31 Modified (May 3)
Hume	72%	61%
South Nelson	99%	92%
Blewett	147%	88%
Rosemont	76%	98%
Redfish	72%	84%
Central	60%	113%
Trafalgar	74%	0%
LVR (based on Functional)	76%	91-95% dep on Int'l



# Impact of Scenario – Capacity Utilization

59 unused blocks (not including out buildings)

$\times 30$  students/block

1770 blocks available

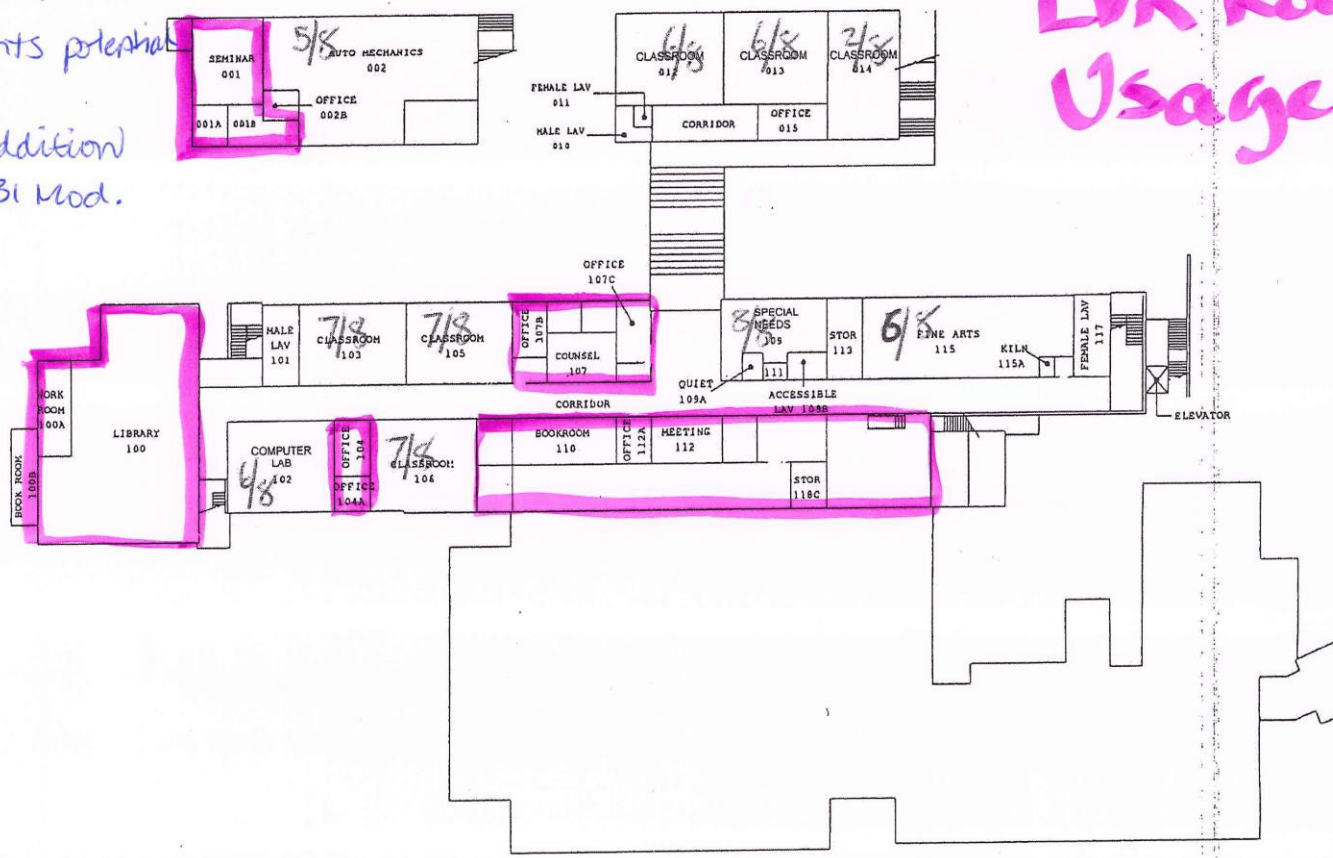
$\div 8$  blocks/students

221 students potential

Proposed addition

$\approx 150$  N31 Mod.

2014/2015  
LVR Room  
Usage



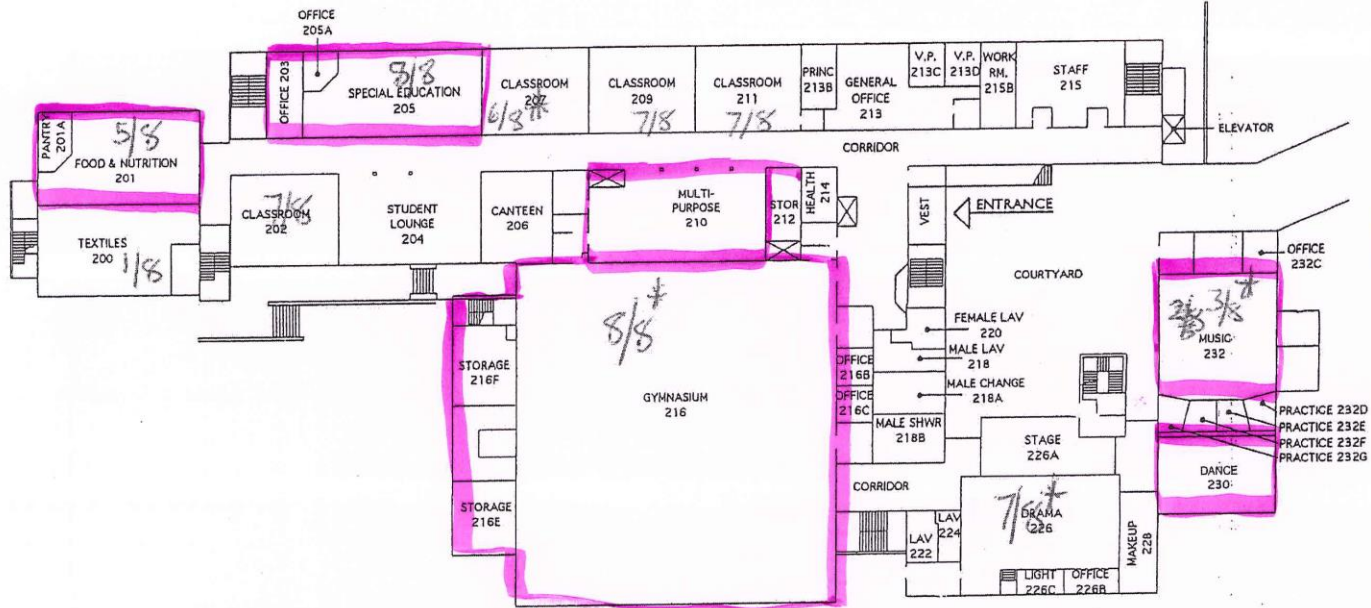
L.V. ROGERS SECONDARY SCHOOL - FIRST FLOOR





# Impact of Scenario – Capacity Utilization

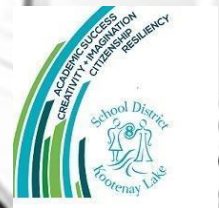
2014-2015  
Room Usage  
LVR



Portable

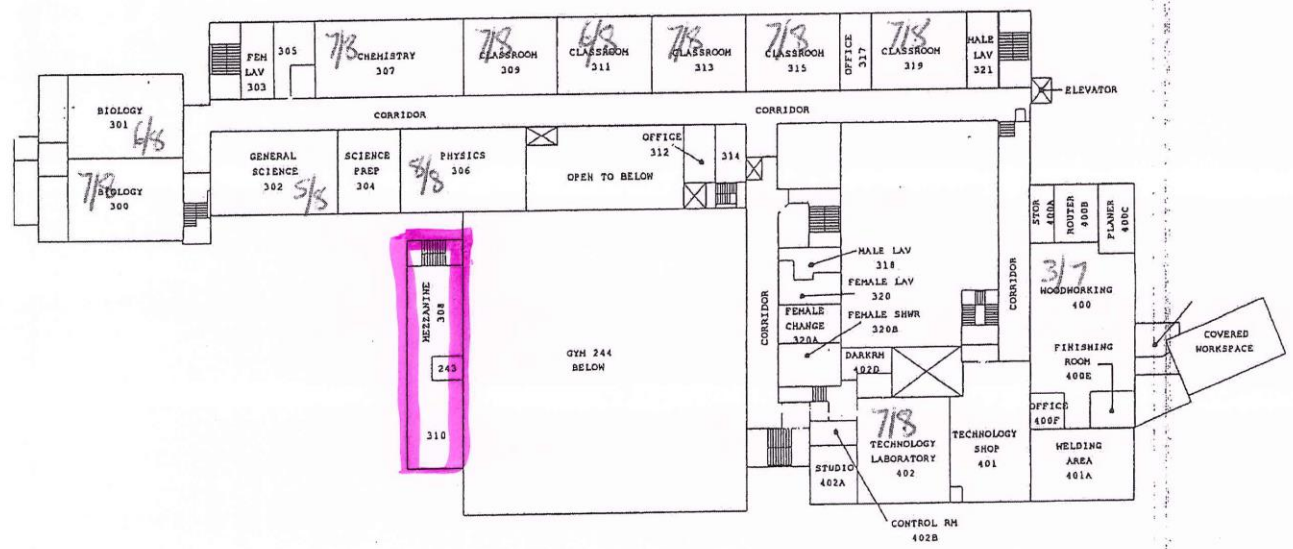
\* These rooms are used for classes outside the timetable.

Daycare = Portable

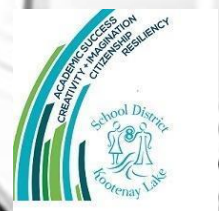


# Impact of Scenario – Capacity Utilization

2014-2015  
LVR Room  
Usage



L.V.ROGERS SECONDARY SCHOOL - THIRD FLOOR



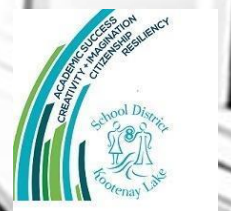
# Closure Framework Should a School Close

- Decommissioning Schools After School Closure
- If a decision has been made to close a school, the physical plant must be decommissioned and students, staff, resources and equipment transitioned to new sites. The following is a an excerpt from the DRAFT framework for the closing of a school and transitioning to a new site. Framework is expected to be customized for each school and timeline



# In Preparation for Closure

- Arrange transition visits, if possible, for students and staff from closing schools to visit receiving schools; and joint PAC meetings
- School that is closing and school to where students are redirected prepare a transition plan for students
  - Opportunities for students from school that is closing to visit and interact with students from the school where they are being redirected
  - Opportunities for staff from closing school to meet with staff at school where students are being redirected to speak to the learning needs of students being transitioned
- Closing school to host/hold public event honouring the history of learning at the school



# Last Day of Closing School to First Day of Receiving School (during summer)

- Invite to make requests for resources, in the following order:
  - Receiving school (Team: P or VP, PAC Chair and IT Rep for receiving school tech needs)
  - Schools in the family of schools
  - All remaining schools in the district
- District staff consider requests and allocate inventory; operations crew to move
- Move remaining resources to a district storage facility for future use or auction



# Next Steps

- June 15-July 5: Board continues to gather information
- July 5: First and Second Reading of School Closure By-Law
- July 12: Third Reading of School Closure By-Law

# Next Steps Cont.

## If 3<sup>rd</sup> Bylaw Reading Passes

- Capital plan including Blewett and Central renovations and new South Nelson construction is submitted to Ministry to secure capital funds
- Disposal process begins (surplus, non-SD8 student sites) to build local capital surplus for renovations
- Once Blewett and Central renovations are completed, Trafalgar closes and schools are re-configured

## If 3<sup>rd</sup> Bylaw Reading Fails

- Status quo

**Thank you**

